

PROJECT

Glen Earrach Pumped Storage Hydro

CLIENT

Glen Earrach Energy Ltd.

CONSULTANT

AECOM Limited  
1 Tanfield, Inverleith Row  
Edinburgh  
EH3 5DA  
www.aecom.com

LEGEND

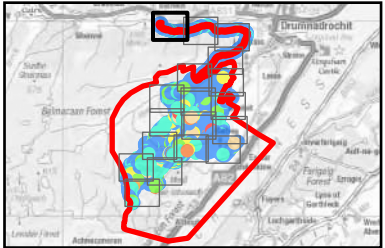
- Red Line Boundary
- Permanent Compounds
- Temporary Construction Compounds
- Material Stockpile
- Core Path Existing Route
- Core Path Route Re-alignment

Access Tracks

- Pre-Construction Phase - Existing

Peat Probe Location and Depth (m)

- 0.00 - 0.50
- 0.51 - 1.00
- 1.01 - 1.50



NOTES

Contains OS data © Crown copyright 2025

Below ground infrastructure not assessed as justified within Section 1 of the PLHRA report.

ISSUE PURPOSE

FINAL

PROJECT NUMBER

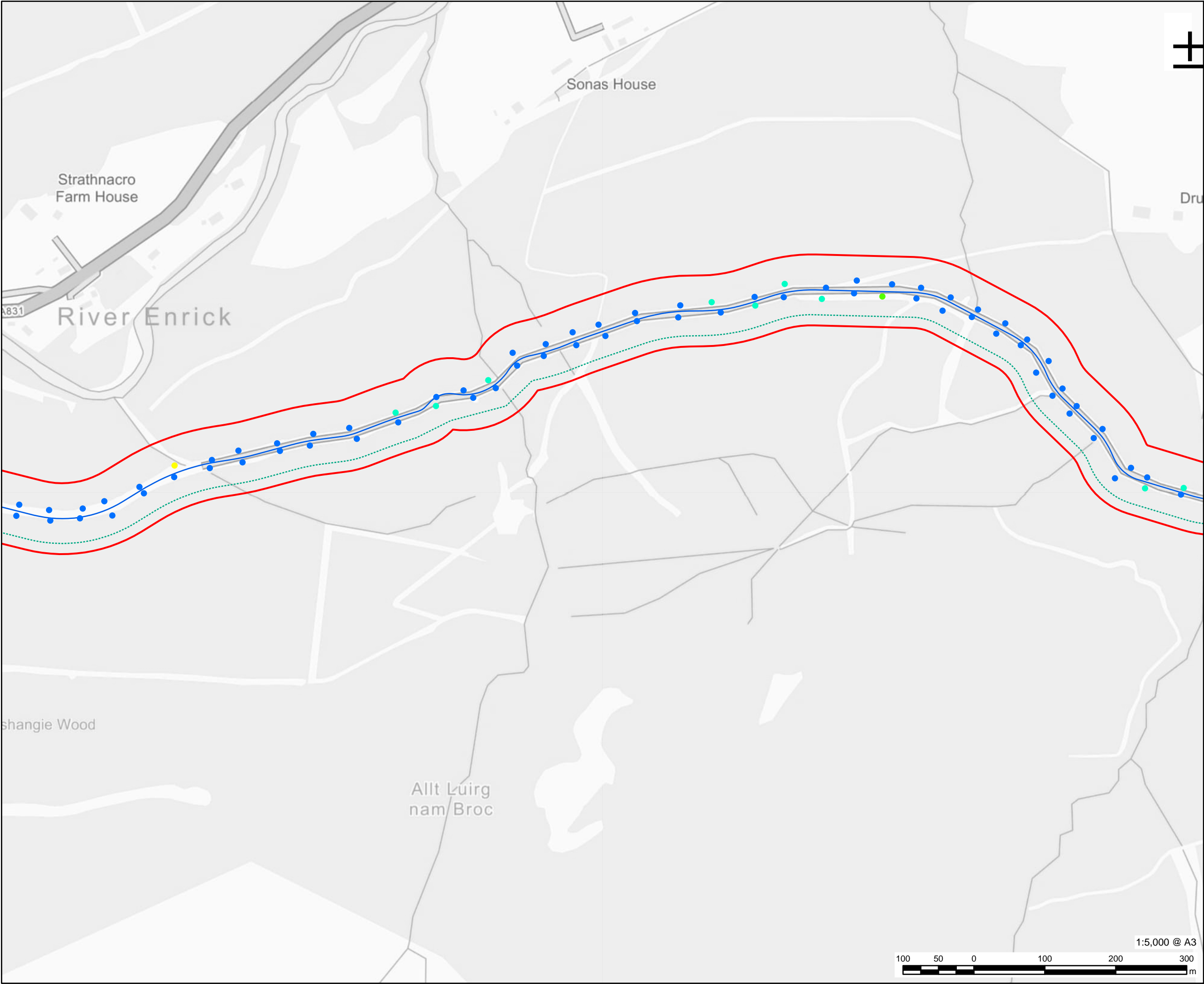
60719875

FIGURE TITLE

Peat Probe Survey Results

FIGURE NUMBER

Figure 15.4



# AECOM

PROJECT

Glen Earrach Pumped Storage Hydro

CLIENT

Glen Earrach Energy Ltd.

CONSULTANT

AECOM Limited  
1 Tanfield, Inverleith Row  
Edinburgh  
EH3 5DA  
www.aecom.com

LEGEND

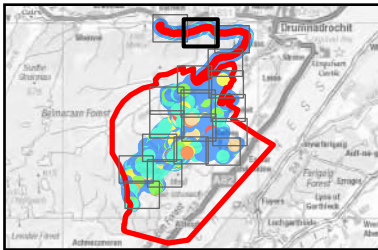
- Red Line Boundary
- Permanent Compounds
- Temporary Construction Compounds
- Material Stockpile
- Core Path Route Re-alignment

Access Tracks

- Pre-Construction Phase - Existing

Peat Probe Location and Depth (m)

- 0.00 - 0.50
- 0.51 - 1.00
- 1.01 - 1.50
- 1.51 - 2.00



NOTES

Contains OS data © Crown copyright 2025

Below ground infrastructure not assessed as justified within Section 1 of the PLHRA report.

ISSUE PURPOSE

FINAL

PROJECT NUMBER

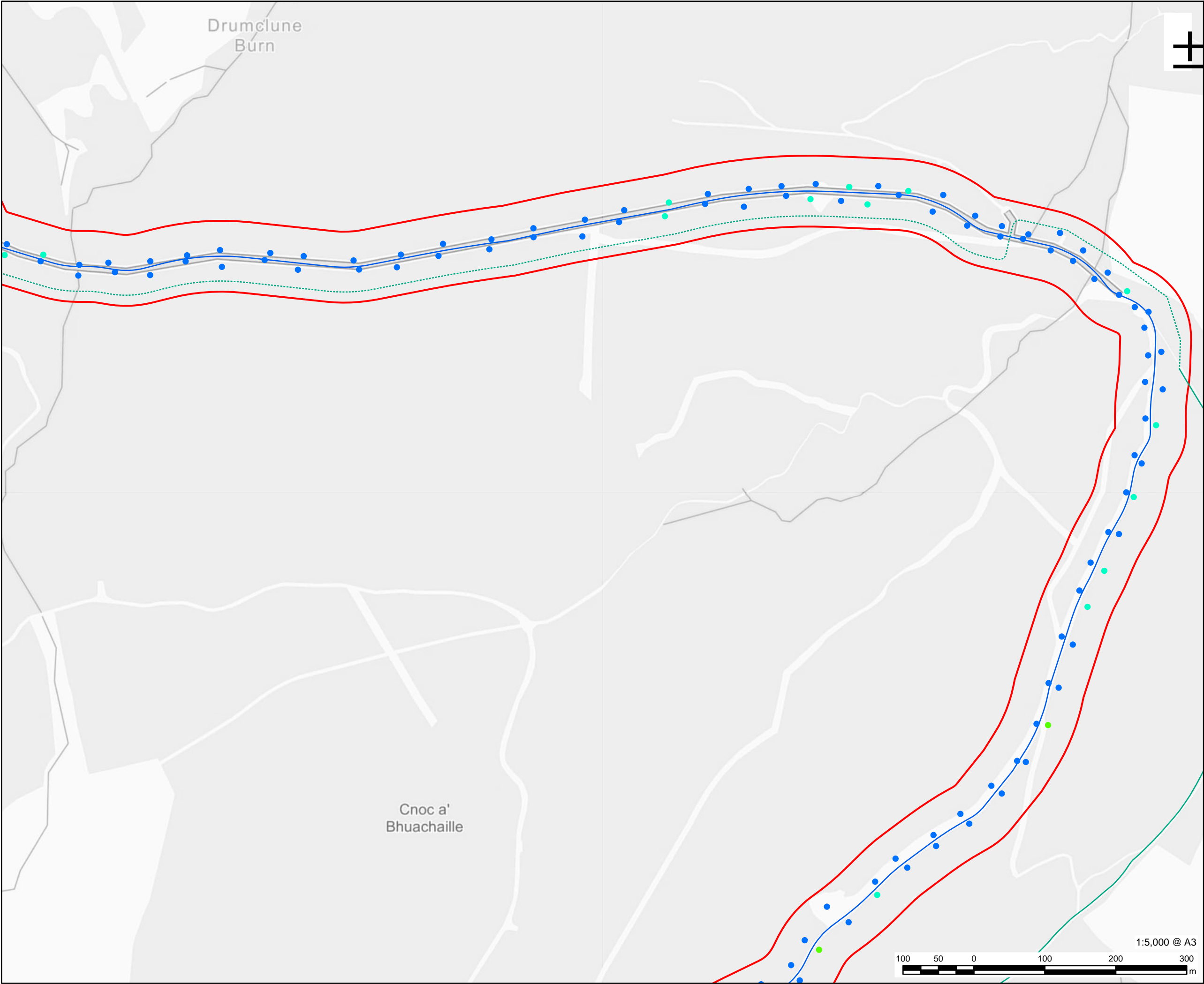
60719875

FIGURE TITLE

Peat Probe Survey Results

FIGURE NUMBER

Figure 15.4



# AECOM

PROJECT

Glen Earrach Pumped Storage Hydro

CLIENT

Glen Earrach Energy Ltd.

CONSULTANT

AECOM Limited  
1 Tanfield, Inverleith Row  
Edinburgh  
EH3 5DA  
www.aecom.com

LEGEND

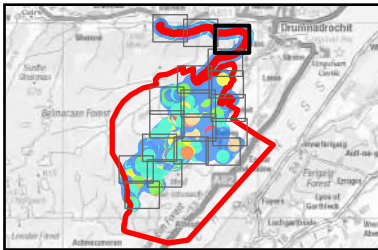
- Red Line Boundary
- Permanent Compounds
- Temporary Construction Compounds
- Material Stockpile
- Core Path Existing Route
- Core Path Route Re-alignment

Access Tracks

- Pre-Construction Phase - Existing

Peat Probe Location and Depth (m)

- 0.00 - 0.50
- 0.51 - 1.00
- 1.01 - 1.50



NOTES

Contains OS data © Crown copyright 2025

Below ground infrastructure not assessed as justified within Section 1 of the PLHRA report.

ISSUE PURPOSE

FINAL

PROJECT NUMBER

60719875

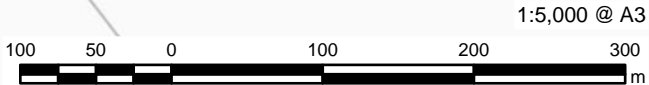
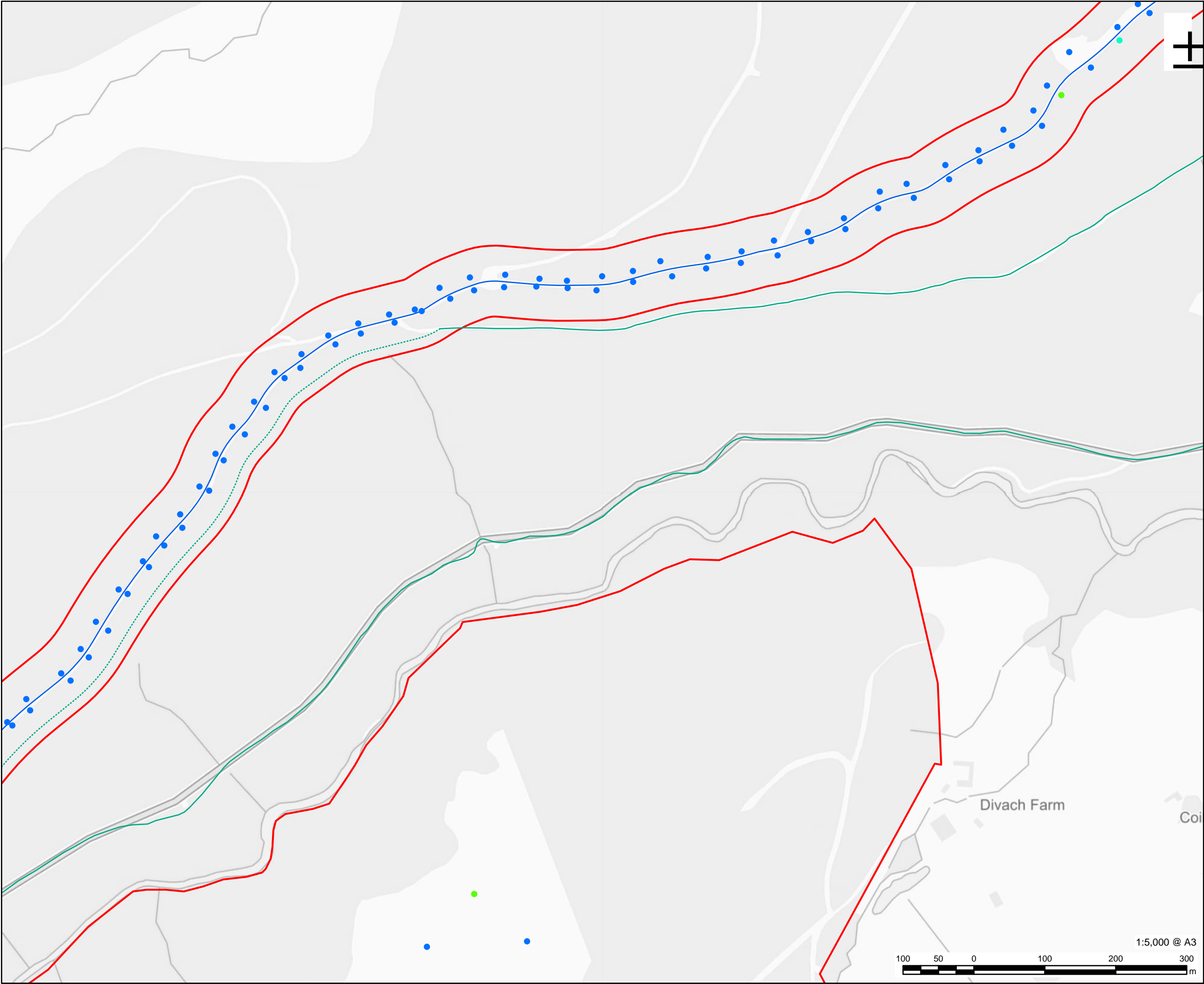
FIGURE TITLE

Peat Probe Survey Results

FIGURE NUMBER

Figure 15.4





**AECOM**

PROJECT

Glen Earrach Pumped Storage Hydro

CLIENT

Glen Earrach Energy Ltd.

CONSULTANT

AECOM Limited  
1 Tanfield, Inverleith Row  
Edinburgh  
EH3 5DA  
www.aecom.com

LEGEND

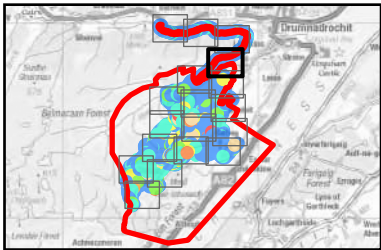
- Red Line Boundary
- Permanent Compounds
- Temporary Construction Compounds
- Material Stockpile
- Core Path Existing Route
- Core Path Route Re-alignment

Access Tracks

- Pre-Construction Phase - Existing

Peat Probe Location and Depth (m)

- 0.00 - 0.50
- 0.51 - 1.00
- 1.01 - 1.50



NOTES

Contains OS data © Crown copyright 2025

Below ground infrastructure not assessed as justified within Section 1 of the PLHRA report.

ISSUE PURPOSE

FINAL

PROJECT NUMBER

60719875

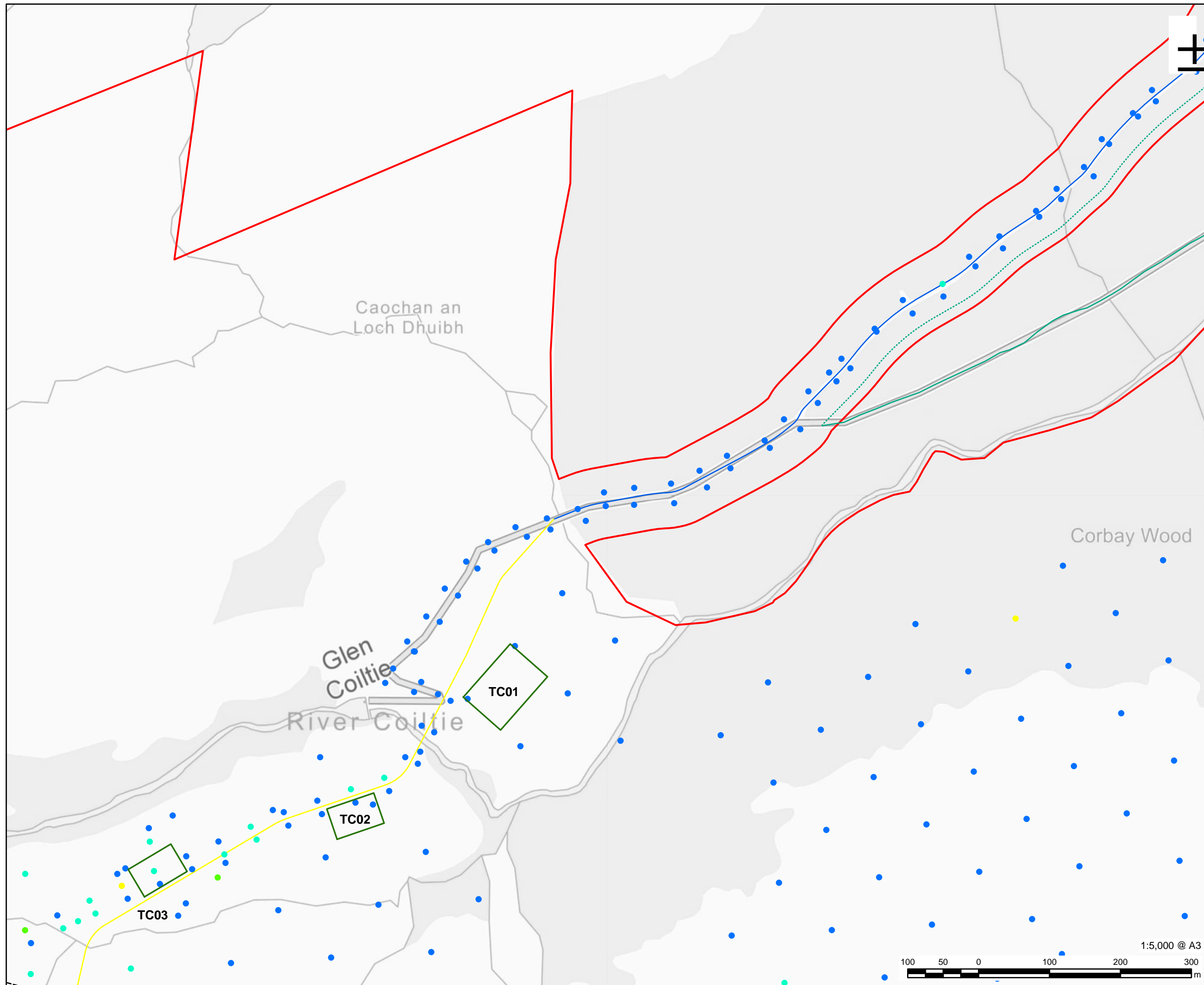
FIGURE TITLE

Peat Probe Survey Results

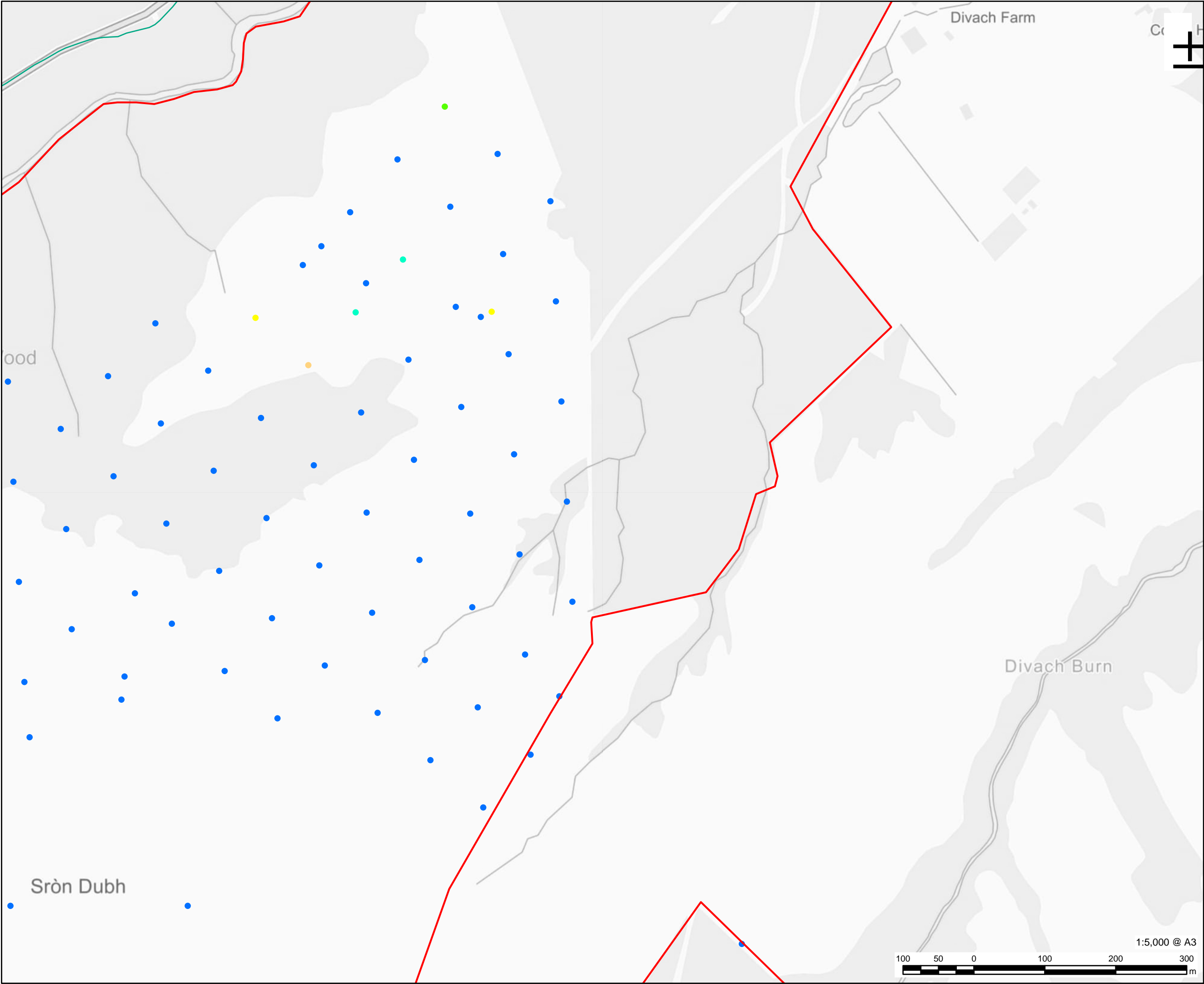
FIGURE NUMBER

Figure 15.4

Page 4 of 18



This drawing has been prepared for the use of AECOM's client. It may not be used, modified, reproduced or relied upon by third parties, except as agreed by AECOM. As required by law, AECOM accepts no responsibility, and denies any liability, whatsoever, for any party's reliance on this drawing without AECOM's express written consent. All measurements must be obtained from the stated dimensions.



PROJECT

Glen Earrach Pumped Storage Hydro

CLIENT

Glen Earrach Energy Ltd.

CONSULTANT

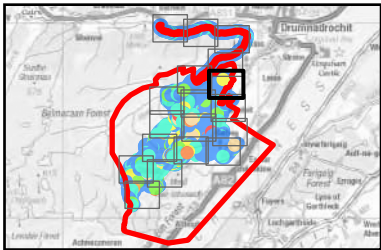
AECOM Limited  
1 Tanfield, Inverleith Row  
Edinburgh  
EH3 5DA  
www.aecom.com

LEGEND

- Red Line Boundary
- Permanent Compounds
- Temporary Construction Compounds
- Material Stockpile
- Core Path Existing Route

Peat Probe Location and Depth (m)

- 0.00 - 0.50
- 0.51 - 1.00
- 1.01 - 1.50
- 1.51 - 2.00
- 2.01 - 2.50



NOTES

Contains OS data © Crown copyright 2025

Below ground infrastructure not assessed as justified within Section 1 of the PLHRA report.

ISSUE PURPOSE

FINAL

PROJECT NUMBER

60719875

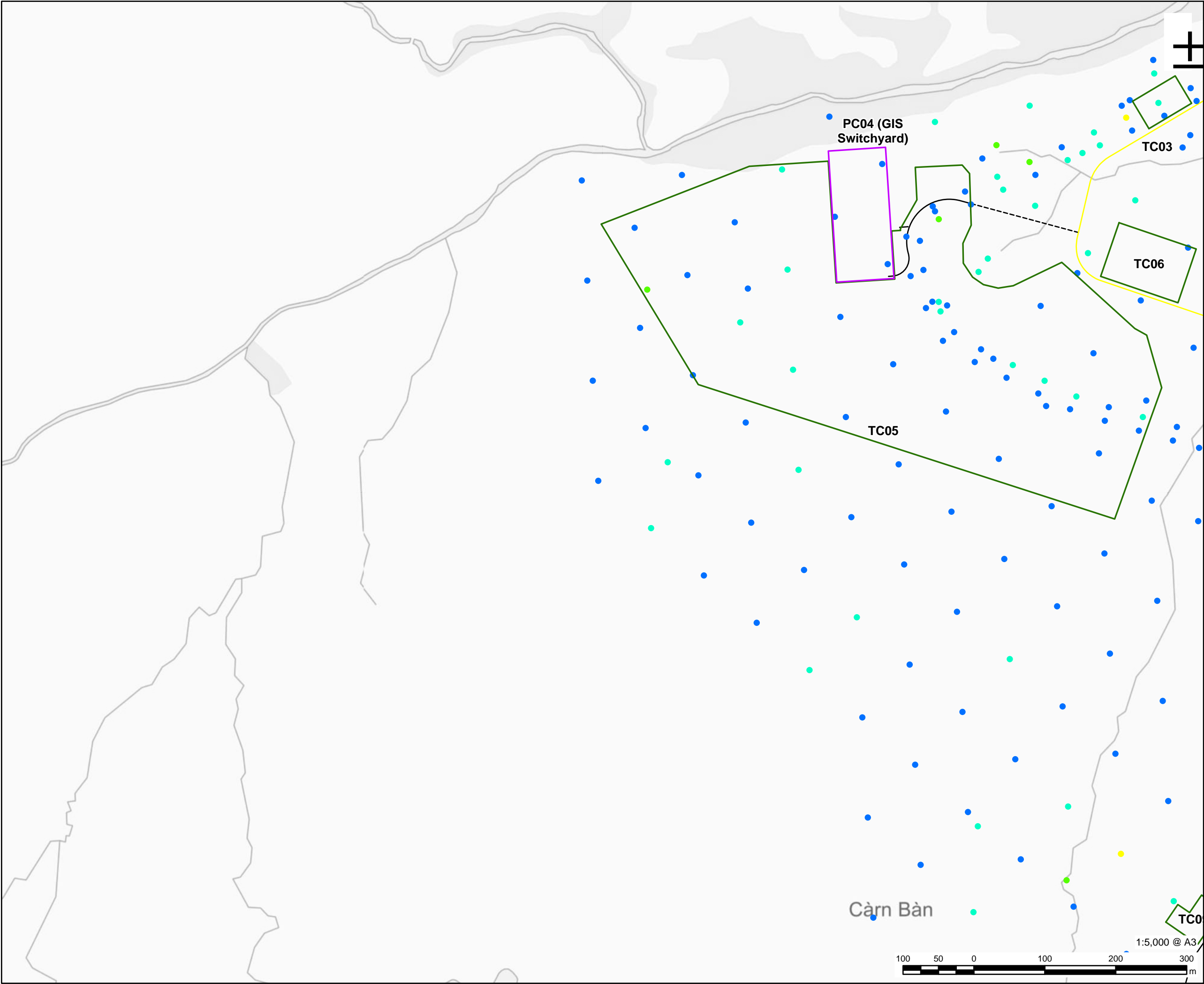
FIGURE TITLE

Peat Probe Survey Results

FIGURE NUMBER

Figure 15.4





# AECOM

**PROJECT**  
Glen Earrach Pumped Storage Hydro

**CLIENT**  
Glen Earrach Energy Ltd.

**CONSULTANT**  
AECOM Limited  
1 Tanfield, Inverleith Row  
Edinburgh  
EH3 5DA  
www.aecom.com

**LEGEND**

- Red Line Boundary
- Permanent Compounds
- Temporary Construction Compounds
- Material Stockpile

**Access Tracks**

- Construction Phase - Permanent
- Construction Phase - Temporary (Construction)
- Pre-Construction Phase - Permanent

**Peat Probe Location and Depth (m)**

- 0.00 - 0.50
- 0.51 - 1.00
- 1.01 - 1.50
- 1.51 - 2.00

**NOTES**

Contains OS data © Crown copyright 2025

Below ground infrastructure not assessed as justified within Section 1 of the PLHRA report.

**ISSUE PURPOSE**  
FINAL

**PROJECT NUMBER**  
60719875

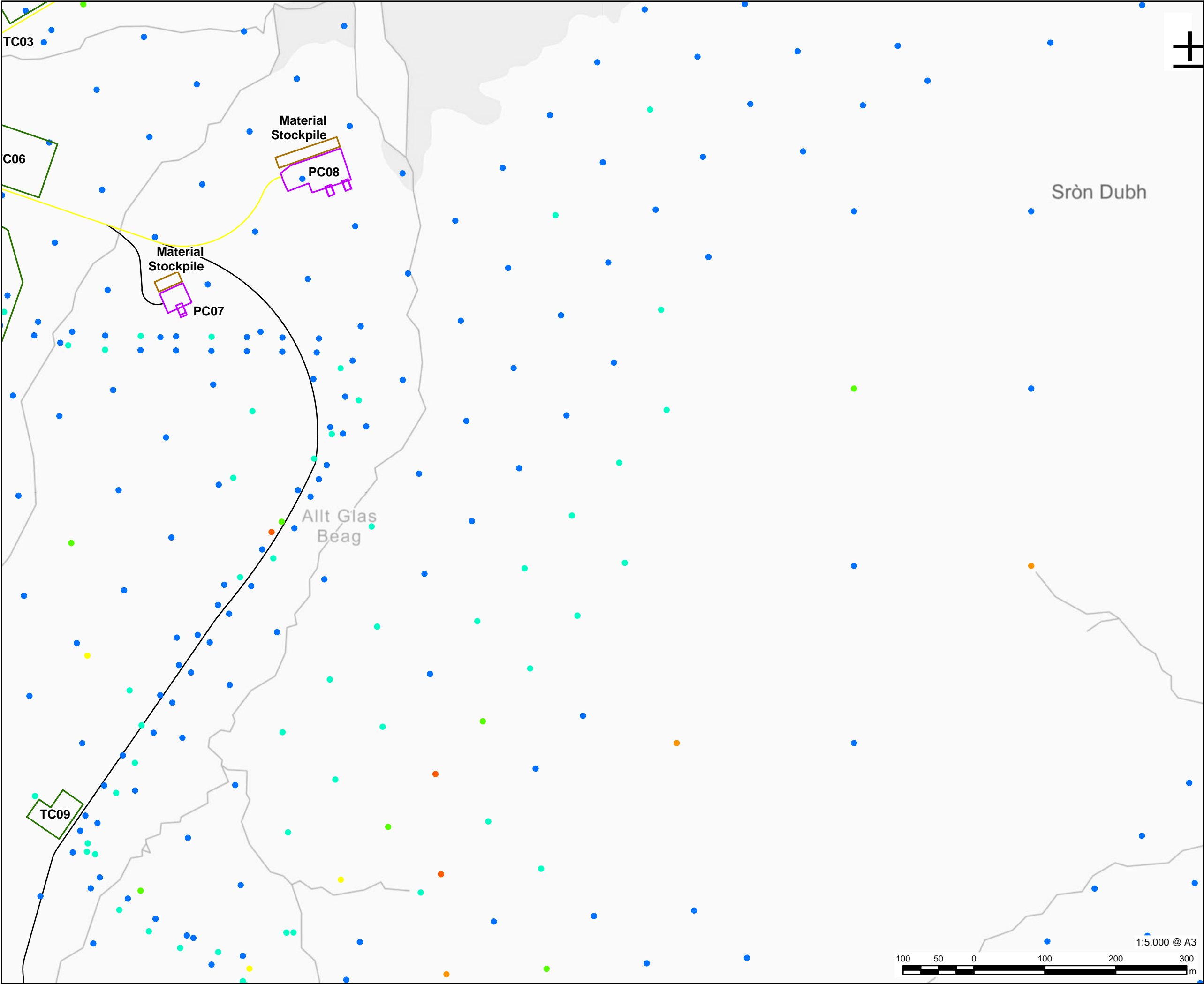
**FIGURE TITLE**  
Peat Probe Survey Results

**FIGURE NUMBER**  
Figure 15.4

1:5,000 @ A3

TC0

Page 7 of 18



# AECOM

## PROJECT

Glen Earrach Pumped Storage Hydro

## CLIENT

Glen Earrach Energy Ltd.

## CONSULTANT

AECOM Limited  
1 Tanfield, Inverleith Row  
Edinburgh  
EH3 5DA  
www.aecom.com

## LEGEND

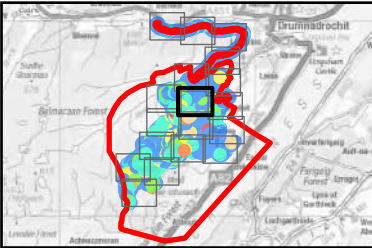
- Red Line Boundary
- Permanent Compounds
- Temporary Construction Compounds
- Material Stockpile

## Access Tracks

- Construction Phase - Permanent
- Pre-Construction Phase - Permanent

## Peat Probe Location and Depth (m)

- 0.00 - 0.50
- 0.51 - 1.00
- 1.01 - 1.50
- 1.51 - 2.00
- 2.51 - 3.00
- 3.01 - 3.50



## NOTES

Contains OS data © Crown copyright 2025

Below ground infrastructure not assessed as justified within Section 1 of the PLHRA report.

## ISSUE PURPOSE

FINAL

## PROJECT NUMBER

60719875

## FIGURE TITLE

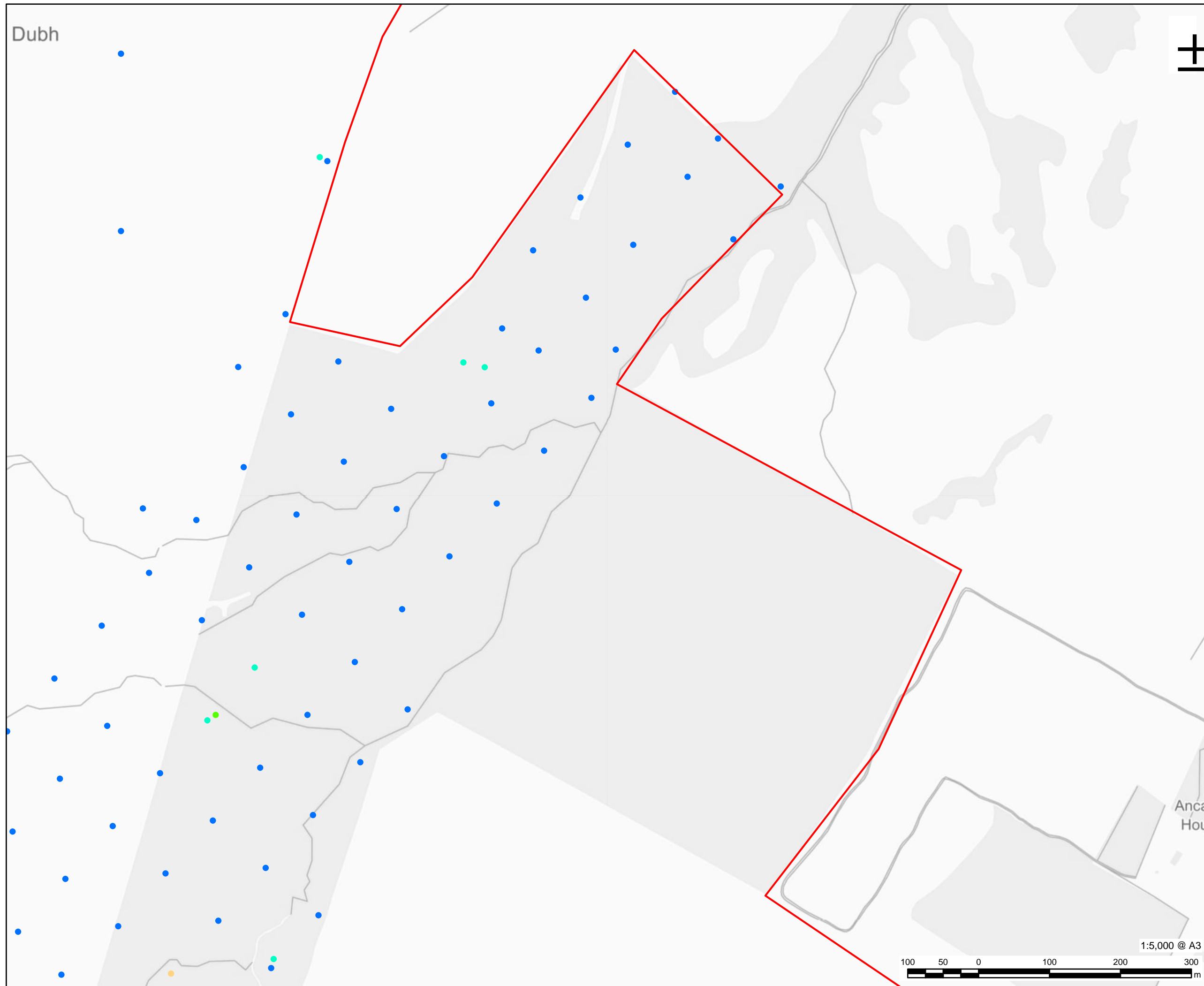
Peat Probe Survey Results

## FIGURE NUMBER

Figure 15.4

Page 8 of 18





+

**AECOM**

## PROJECT

Glen Earrach Pumped  
Storage Hydro





**CLIENT**

Glen Earrach Energy Ltd.

## CONSULTANT

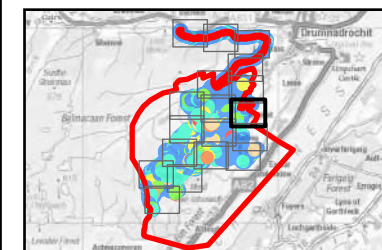
AECOM Limited  
1 Tanfield, Inverleith Row  
Edinburgh  
EH3 5DA  
[www.aecom.com](http://www.aecom.com)

## LEGEND

-  Red Line Boundary
-  Permanent Compounds
-  Temporary Construction Compounds
-  Material Stockpile

## Peat Probe Location and Depth (m)

- 0.00 - 0.50
- 0.51 - 1.00
- 1.01 - 1.50
- 2.01 - 2.50



## NOTES

Contains OS data © Crown copyright 2025

Below ground infrastructure not assessed as justified within Section 1 of the PLHRA report.

## ISSUE PURPOSE

FINAL

## PROJECT NUMBER

60719875

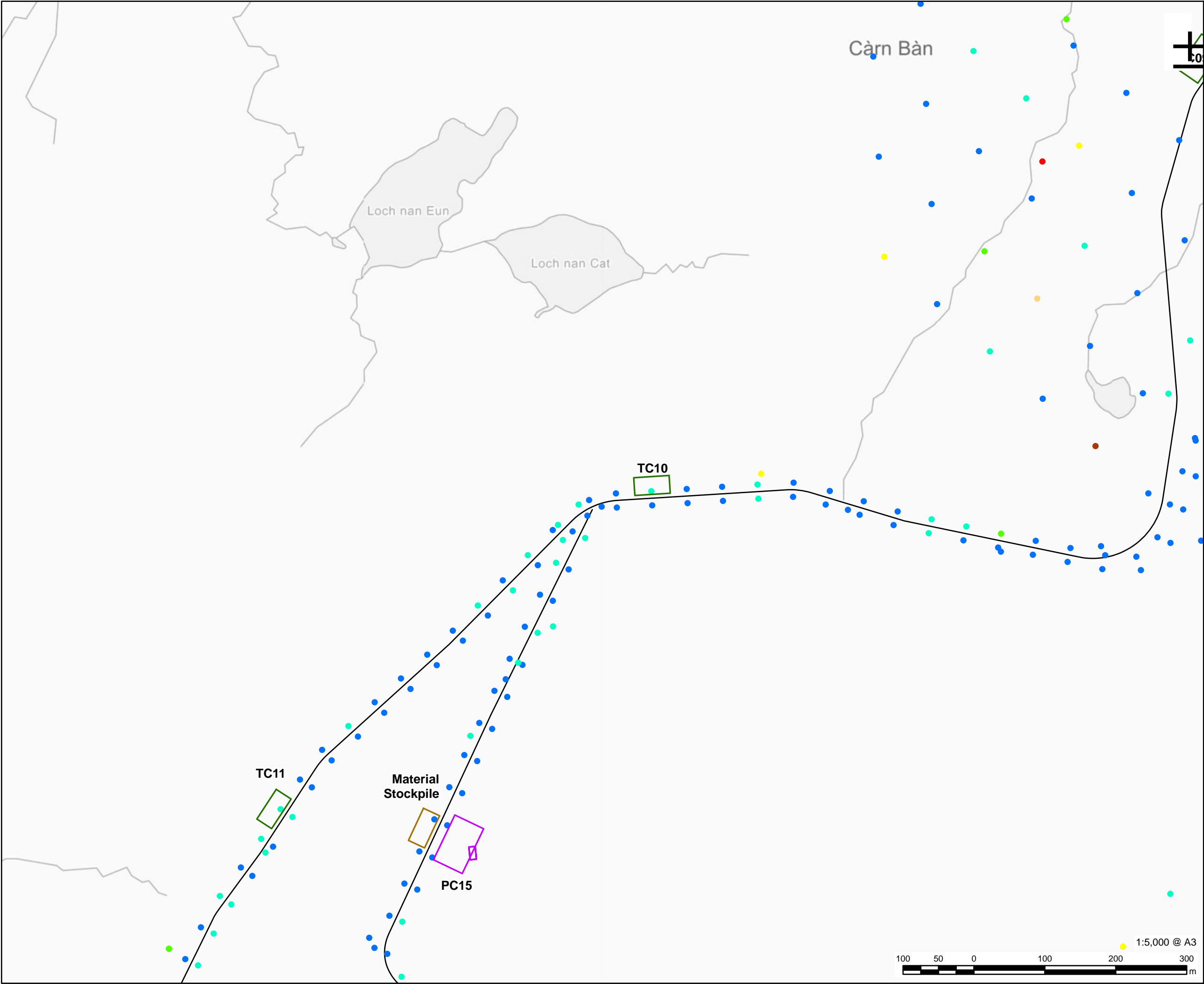
## FIGURE TITLE

## Peat Probe Survey Results

## FIGURE NUMBER

Figure 15.4

Page 9 of 18



**PROJECT**  
Glen Earrach Pumped Storage Hydro

**CLIENT**  
Glen Earrach Energy Ltd.

**CONSULTANT**  
AECOM Limited  
1 Tanfield, Inverleith Row  
Edinburgh  
EH3 5DA  
www.aecom.com

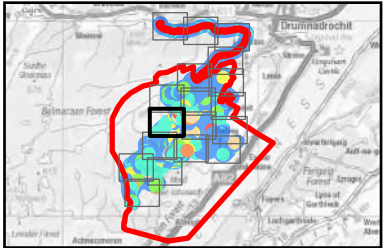
**LEGEND**

- Red Line Boundary
- Permanent Compounds
- Temporary Construction Compounds
- Material Stockpile

**Access Tracks**  
Construction Phase - Permanent

**Peat Probe Location and Depth (m)**

- 0.00 - 0.50
- 0.51 - 1.00
- 1.01 - 1.50
- 1.51 - 2.00
- 2.01 - 2.50
- 3.51 - 4.00
- 4.01 - 4.50



**NOTES**  
Contains OS data © Crown copyright 2025

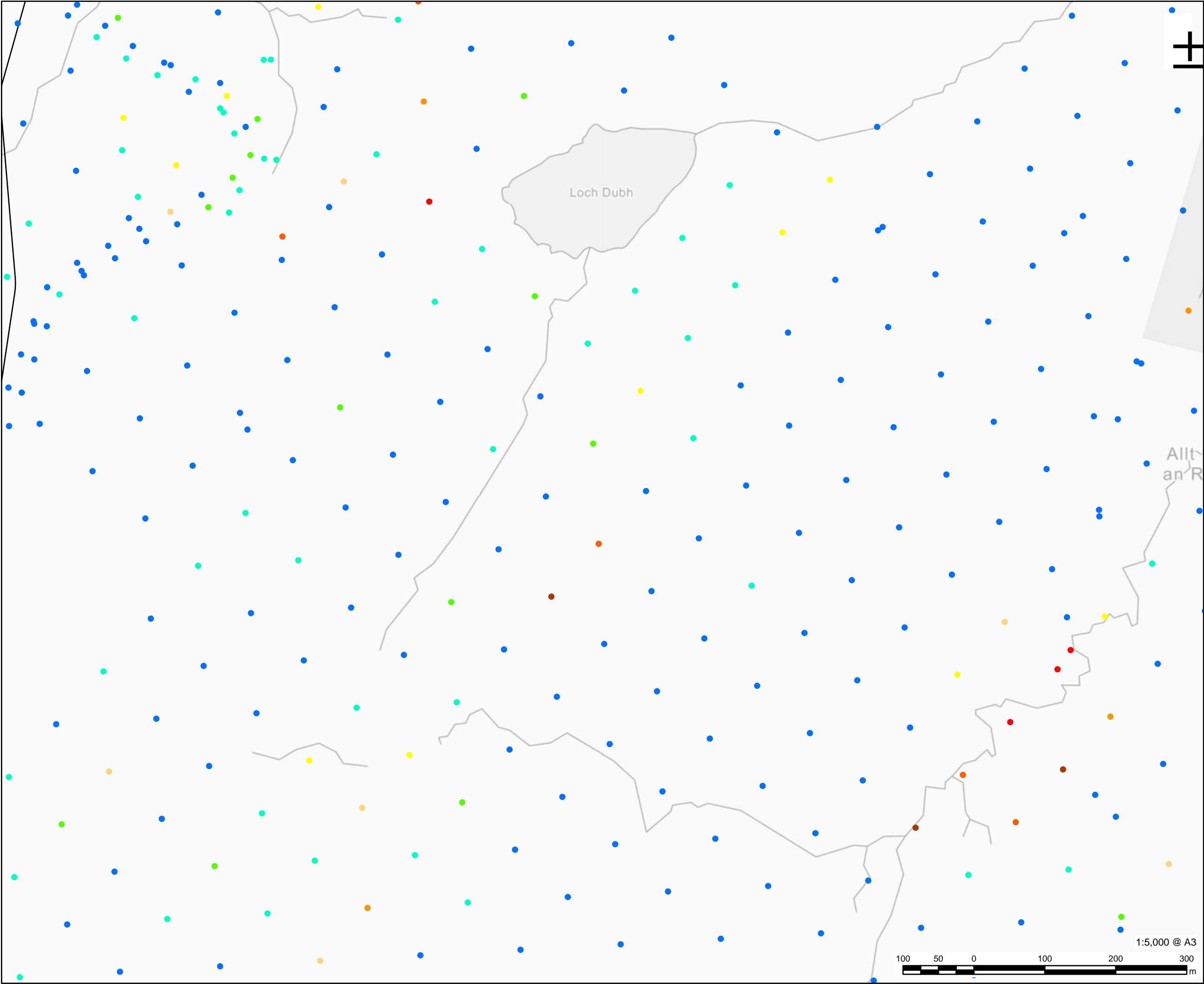
Below ground infrastructure not assessed as justified within Section 1 of the PLHRA report.

**ISSUE PURPOSE**  
FINAL

**PROJECT NUMBER**  
60719875

**FIGURE TITLE**  
Peat Probe Survey Results

**FIGURE NUMBER**  
Figure 15.4



This drawing has been prepared for the use of AECOM's client. It may not be used, modified, reproduced or relied upon by third parties, except as agreed by AECOM or as required by law. AECOM accepts no responsibility, and denies any liability whatsoever, for any party's reliance on or use of this drawing without AECOM's express written consent. Do not scale. All measurements must be obtained from the stated dimensions.

# AECOM

PROJECT

Glen Earrach Pumped Storage Hydro

CLIENT

Glen Earrach Energy Ltd.

CONSULTANT

AECOM Limited  
1 Tanfield, Inverleith Row  
Edinburgh  
EH3 5DA  
www.aecom.com

LEGEND

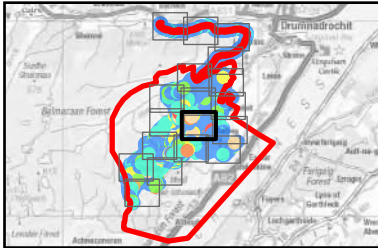
- Red Line Boundary
- Permanent Compounds
- Temporary Construction Compounds
- Material Stockpile

Access Tracks

- Construction Phase - Permanent

Peat Probe Location and Depth (m)

- 0.00 - 0.50
- 0.51 - 1.00
- 1.01 - 1.50
- 1.51 - 2.00
- 2.01 - 2.50
- 2.51 - 3.00
- 3.01 - 3.50
- 3.51 - 4.00
- 4.01 - 4.50



NOTES

Contains OS data © Crown copyright 2025

Below ground infrastructure not assessed as justified within Section 1 of the PLHRA report.

ISSUE PURPOSE

FINAL

PROJECT NUMBER

60719875

FIGURE TITLE

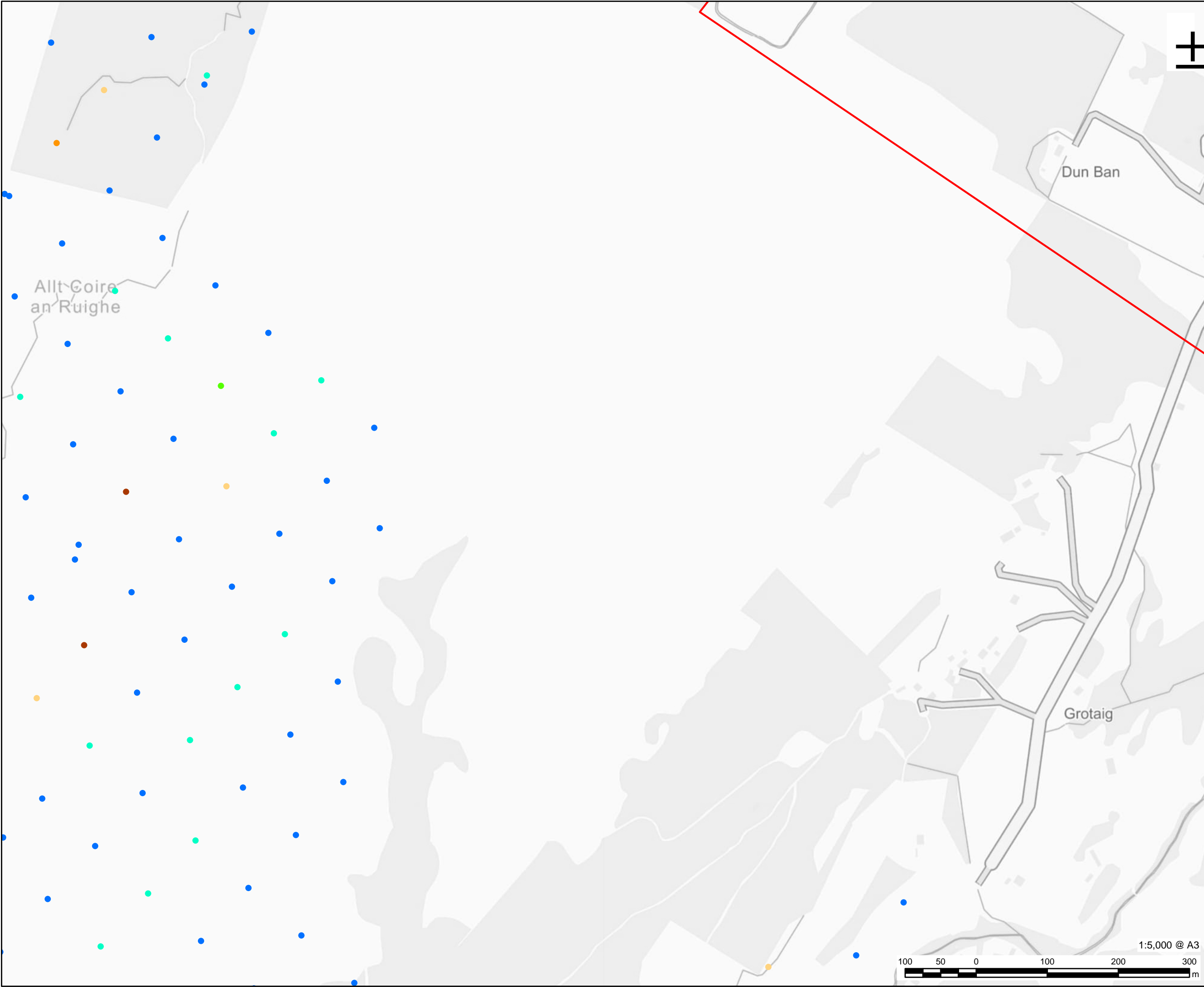
Peat Probe Survey Results

FIGURE NUMBER

Figure 15.4

Page 11 of 18





# AECOM

## PROJECT

Glen Earrach Pumped Storage Hydro

## CLIENT

Glen Earrach Energy Ltd.

## CONSULTANT

AECOM Limited  
1 Tanfield, Inverleith Row  
Edinburgh  
EH3 5DA  
www.aecom.com

## LEGEND

- ▭ Red Line Boundary
- ▬ Permanent Compounds
- ▬ Temporary Construction Compounds
- ▬ Material Stockpile

## Peat Probe Location and Depth (m)

- 0.00 - 0.50
- 0.51 - 1.00
- 1.01 - 1.50
- 2.01 - 2.50
- 2.51 - 3.00
- 4.01 - 4.50



## NOTES

Contains OS data © Crown copyright 2025

Below ground infrastructure not assessed as justified within Section 1 of the PLHRA report.

## ISSUE PURPOSE

FINAL

## PROJECT NUMBER

60719875

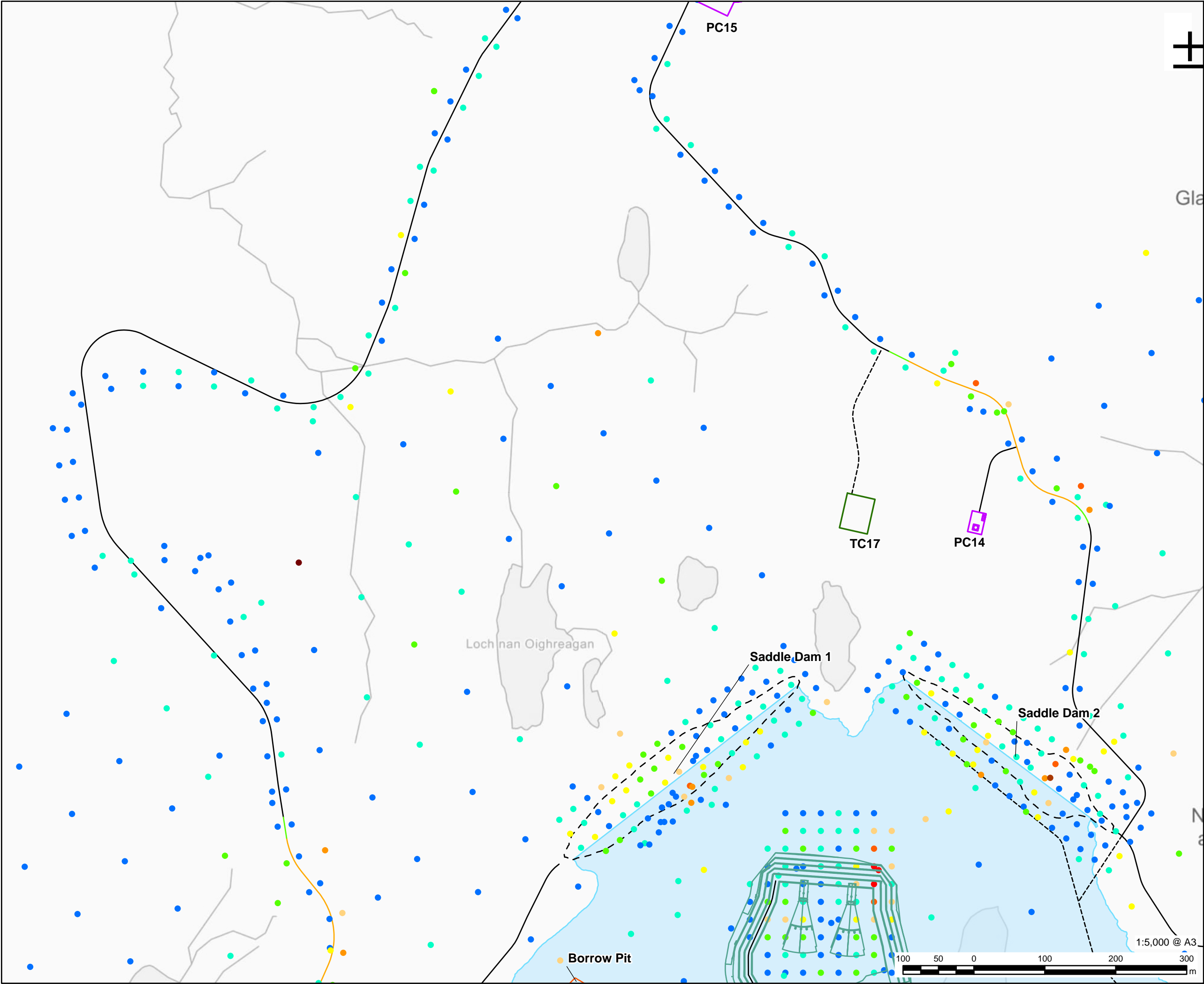
## FIGURE TITLE

Peat Probe Survey Results

## FIGURE NUMBER

Figure 15.4

Page 12 of 18



# AECOM

**PROJECT**  
Glen Earrach Pumped Storage Hydro

**CLIENT**  
Glen Earrach Energy Ltd.

**CONSULTANT**  
AECOM Limited  
1 Tanfield, Inverleith Row  
Edinburgh  
EH3 5DA  
www.aecom.com

**LEGEND**

- Red Line Boundary
- Permanent Compounds
- Temporary Construction Compounds
- Material Stockpile
- Upper Control Works

**Access Tracks**

- Construction Phase - Permanent
- Construction Phase - Permanent (Floating)
- Construction Phase - Permanent (Floating Transition)
- Construction Phase - Temporary (Construction)

**Headpond**

- Dam
- Borrow Pit
- Top Water Level

**Peat Probe Location and Depth (m)**

- 0.00 - 0.50
- 0.51 - 1.00
- 1.01 - 1.50
- 1.51 - 2.00
- 2.01 - 2.50
- 2.51 - 3.00
- 3.01 - 3.50
- 3.51 - 4.00
- 4.01 - 4.50
- 5.01+

**NOTES**

Contains OS data © Crown copyright 2025

Below ground infrastructure not assessed as justified within Section 1 of the PLHRA report.

**ISSUE PURPOSE**  
FINAL

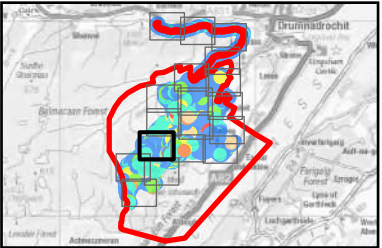
**PROJECT NUMBER**  
60719875

**FIGURE TITLE**  
Peat Probe Survey Results

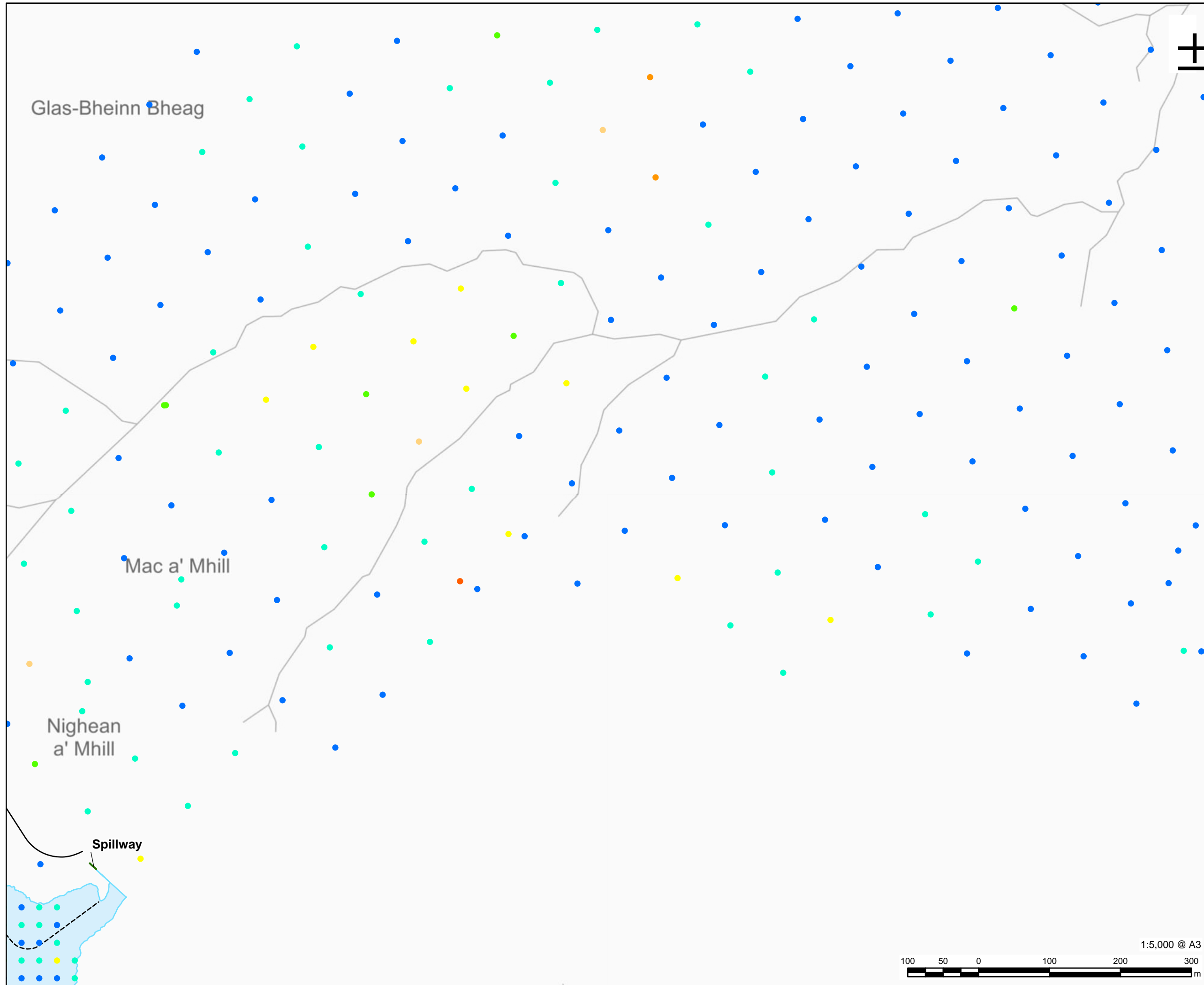
**FIGURE NUMBER**  
Figure 15.4

1:5,000 @ A3

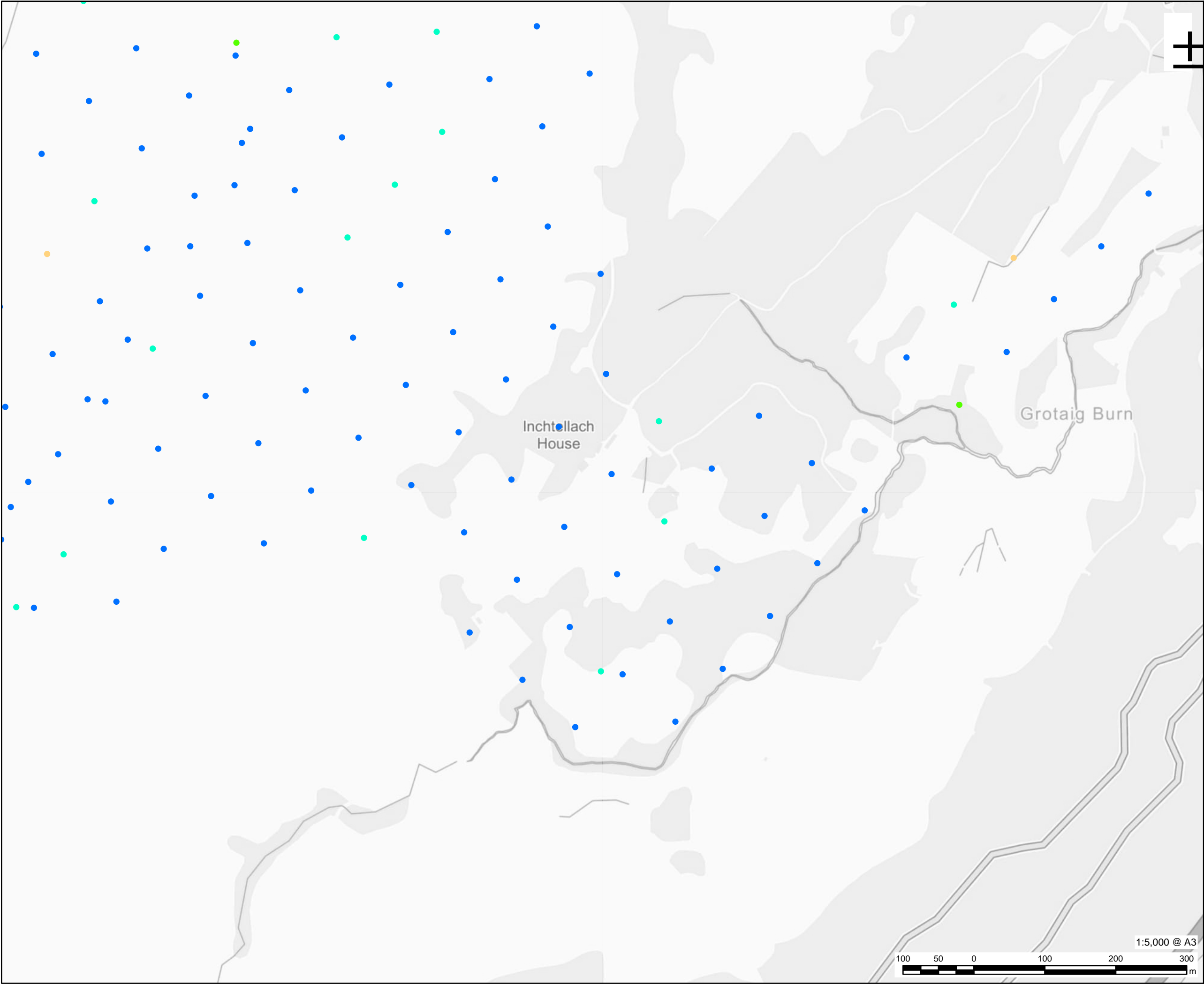
100 50 0 100 200 300 m



This drawing has been prepared for the use of AECOM's client. It may not be used, modified, reproduced or relied upon by third parties, except as assigned by AECOM or as required by law. AECOM accepts no responsibility, and denies any liability whatsoever, for any party's reliance on or use of this drawing without AECOM's express written consent. Do not scale. All measurements must be obtained from the stated dimensions.







PROJECT

Glen Earrach Pumped Storage Hydro

CLIENT

Glen Earrach Energy Ltd.

CONSULTANT

AECOM Limited  
1 Tanfield, Inverleith Row  
Edinburgh  
EH3 5DA  
www.aecom.com

LEGEND

- Red Line Boundary
- Permanent Compounds
- Temporary Construction Compounds
- Material Stockpile

Peat Probe Location and Depth (m)

- 0.00 - 0.50
- 0.51 - 1.00
- 1.01 - 1.50
- 2.01 - 2.50



NOTES

Contains OS data © Crown copyright 2025

Below ground infrastructure not assessed as justified within Section 1 of the PLHRA report.

ISSUE PURPOSE

FINAL

PROJECT NUMBER

60719875

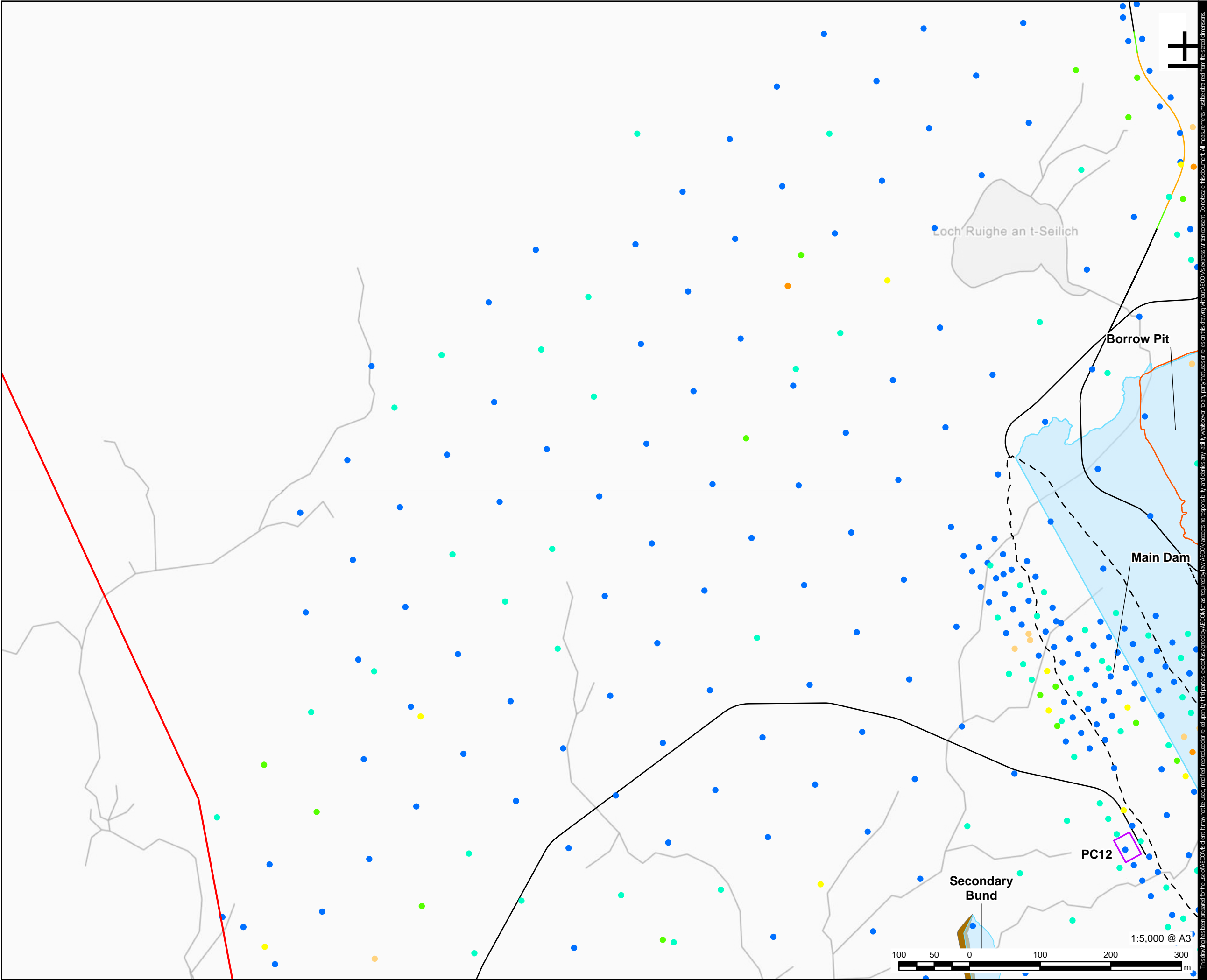
FIGURE TITLE

Peat Probe Survey Results

FIGURE NUMBER

Figure 15.4

Page 15 of 18



This drawing has been prepared for the use of AECOM's client. It may not be used, modified, reproduced or relied upon by third parties, except as agreed by AECOM or as required by law. AECOM accepts no responsibility, and denies any liability whatsoever, for any party's reliance on this drawing without AECOM's express written consent. Do not scale. All measurements must be obtained from the stated dimensions.

# AECOM

## PROJECT

Glen Earrach Pumped Storage Hydro

## CLIENT

Glen Earrach Energy Ltd.

## CONSULTANT

AECOM Limited  
1 Tanfield, Inverleith Row  
Edinburgh  
EH3 5DA  
www.aecom.com

## LEGEND

- Red Line Boundary
- Permanent Compounds
- Temporary Construction Compounds
- Material Stockpile

## Access Tracks

- Construction Phase - Permanent
- Construction Phase - Permanent (Floating)
- Construction Phase - Permanent (Floating Transition)
- Construction Phase - Temporary (Construction)

## Headpond

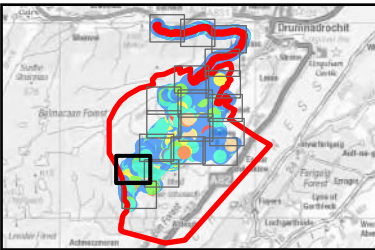
- Dam
- Borrow Pit
- Top Water Level

## Secondary Bund

- Dam
- Top Water Level

## Peat Probe Location and Depth (m)

- 0.00 - 0.50
- 0.51 - 1.00
- 1.01 - 1.50
- 1.51 - 2.00
- 2.01 - 2.50
- 2.51 - 3.00



## NOTES

Contains OS data © Crown copyright 2025

Below ground infrastructure not assessed as justified within Section 1 of the PLHRA report.

## ISSUE PURPOSE

FINAL

## PROJECT NUMBER

60719875

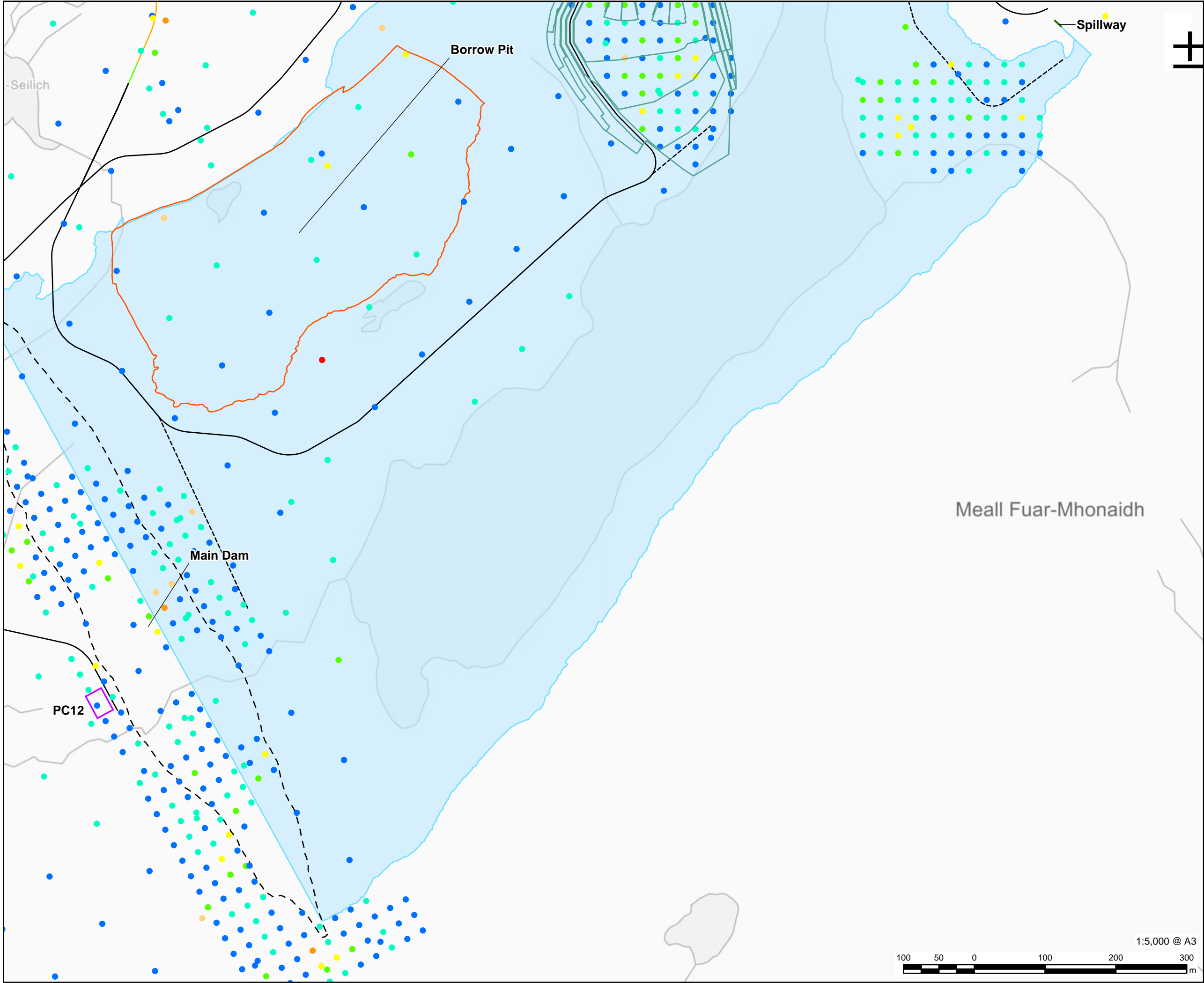
## FIGURE TITLE

Peat Probe Survey Results

## FIGURE NUMBER

Figure 15.4

Page 16 of 18



# AECOM

## PROJECT

Glen Earrach Pumped Storage Hydro

## CLIENT

Glen Earrach Energy Ltd.

## CONSULTANT

AECOM Limited  
1 Tanfield, Inverleith Row  
Edinburgh  
EH3 5DA  
www.aecom.com

## LEGEND

- Red Line Boundary
- Permanent Compounds
- Temporary Construction Compounds
- Material Stockpile
- Upper Control Works

## Access Tracks

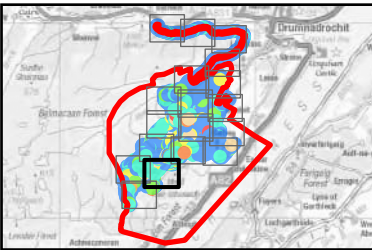
- Construction Phase - Permanent
- Construction Phase - Permanent (Floating)
- Construction Phase - Permanent (Floating Transition)
- Construction Phase - Temporary (Construction)

## Headpond

- Dam
- Spillway
- Borrow Pit
- Top Water Level

## Peat Probe Location and Depth (m)

- 0.00 - 0.50
- 0.51 - 1.00
- 1.01 - 1.50
- 1.51 - 2.00
- 2.01 - 2.50
- 2.51 - 3.00
- 3.51 - 4.00



## NOTES

Contains OS data © Crown copyright 2025

Below ground infrastructure not assessed as justified within Section 1 of the PLHRA report.

## ISSUE PURPOSE

FINAL

## PROJECT NUMBER

60719875

## FIGURE TITLE

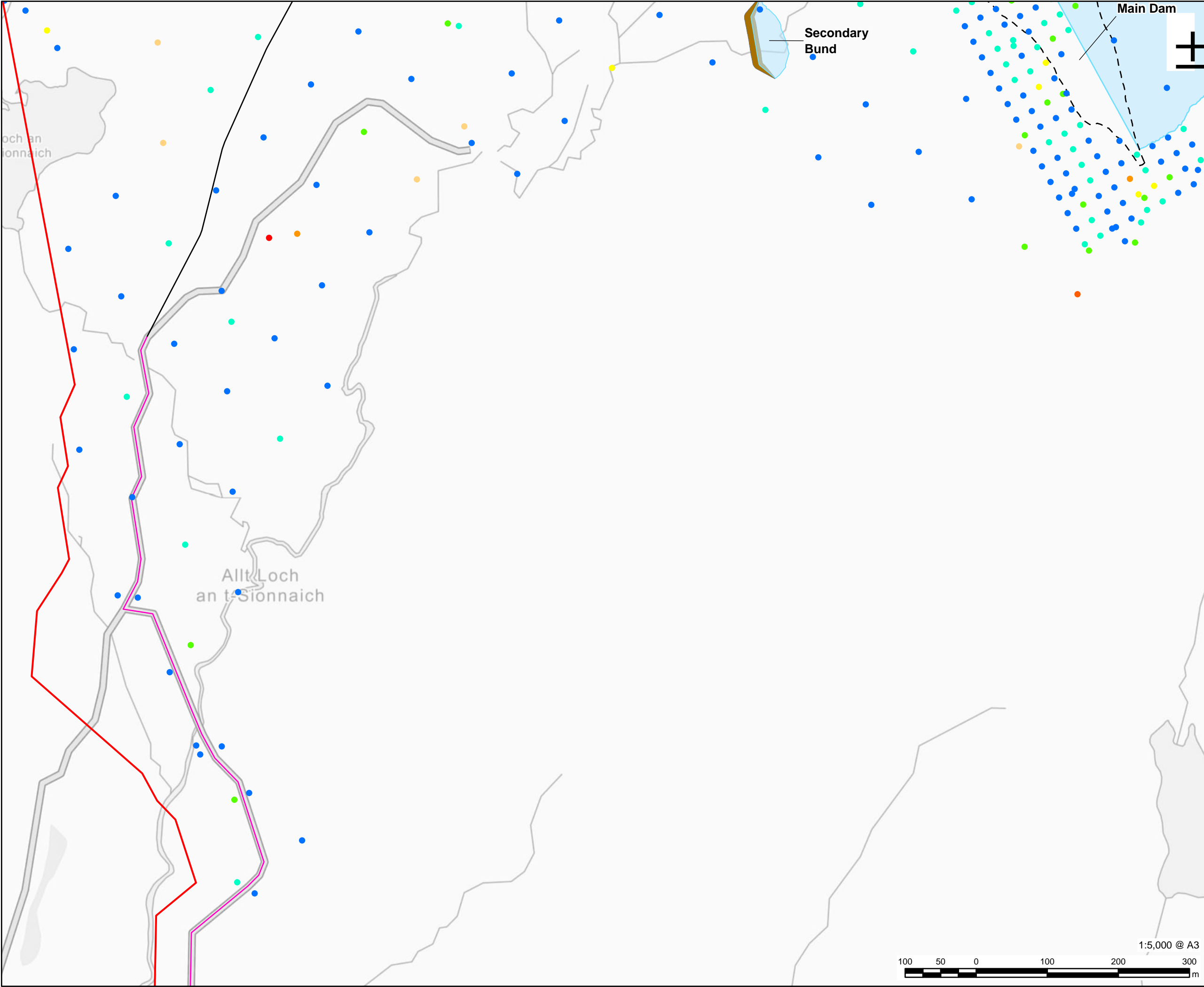
Peat Probe Survey Results

## FIGURE NUMBER

Figure 15.4

Page 17 of 18





This drawing has been prepared for the use of AECOM's client. It may not be used, modified, reproduced or relied upon by third parties, except as agreed by AECOM or as required by law. AECOM accepts no responsibility, and denies any liability whatsoever, for any party's reliance on this drawing without AECOM's express written consent. Do not scale this document. All measurements must be obtained from the stated dimensions.

# AECOM

## PROJECT

Glen Earrach Pumped Storage Hydro

## CLIENT

Glen Earrach Energy Ltd.

## CONSULTANT

AECOM Limited  
1 Tanfield, Inverleith Row  
Edinburgh  
EH3 5DA  
www.aecom.com

## LEGEND

- Red Line Boundary
- Permanent Compounds
- Temporary Construction Compounds
- Material Stockpile

## Access Tracks

- Construction Phase - Permanent
- Operation Phase - Existing

## Headpond

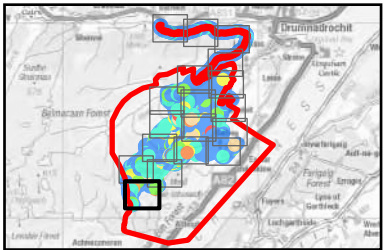
- Dam
- Top Water Level

## Secondary Bund

- Dam
- Top Water Level

## Peat Probe Location and Depth (m)

- 0.00 - 0.50
- 0.51 - 1.00
- 1.01 - 1.50
- 1.51 - 2.00
- 2.01 - 2.50
- 2.51 - 3.00
- 3.01 - 3.50
- 3.51 - 4.00



## NOTES

Contains OS data © Crown copyright 2025

Below ground infrastructure not assessed as justified within Section 1 of the PLHRA report.

## ISSUE PURPOSE

FINAL

## PROJECT NUMBER

60719875

## FIGURE TITLE

Peat Probe Survey Results

## FIGURE NUMBER

Figure 15.4 Page 18 of 18