

This drawing has been prepared for the use of AECOM's client. It may not be used, modified, reproduced or relied upon by third parties, except as agreed by AECOM or as required by law. AECOM accepts no responsibility, and denies any liability whatsoever, to any party that uses or relies on this drawing without AECOM's express written consent. Do not scale this document. All measurements must be obtained from the stated dimensions.

AECOM

PROJECT

Glen Earrach Pumped Storage Hydro

CLIENT

Glen Earrach Energy Ltd.

CONSULTANT

AECOM Limited
177 Bothwell Street
Glasgow
G2 7ER
www.aecom.com

LEGEND

- Red Line Boundary
- Interpolated Peat Depth
 - 1 m +
 - 0.5-0.99 m
 - 0.3-0.49 m
- Peatland Action Condition Categories
 - Peatland - modified
 - Peatland - modified / non-bog wet heath mosaic
 - Non-bog peatland (wet heath; locally flush/fen)
 - Non-peatland (<50% mire NVC)

NOTES

Contains OS data © Crown copyright 2025
Indicated zones of habitat loss and indirect modification are those used in calculations of habitat loss/modification in Chapter 7:
Terrestrial ecology and associated appendices

ISSUE PURPOSE

FINAL

PROJECT NUMBER

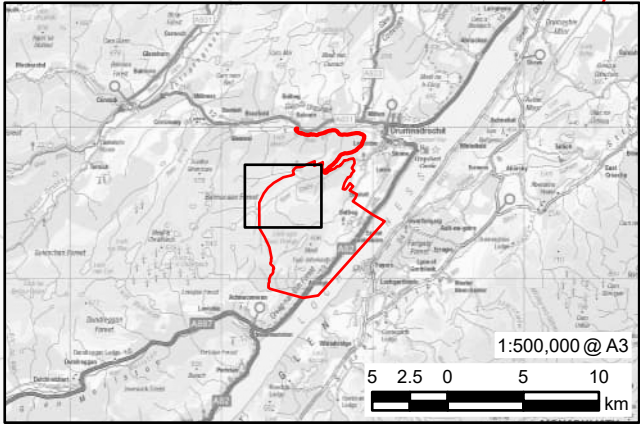
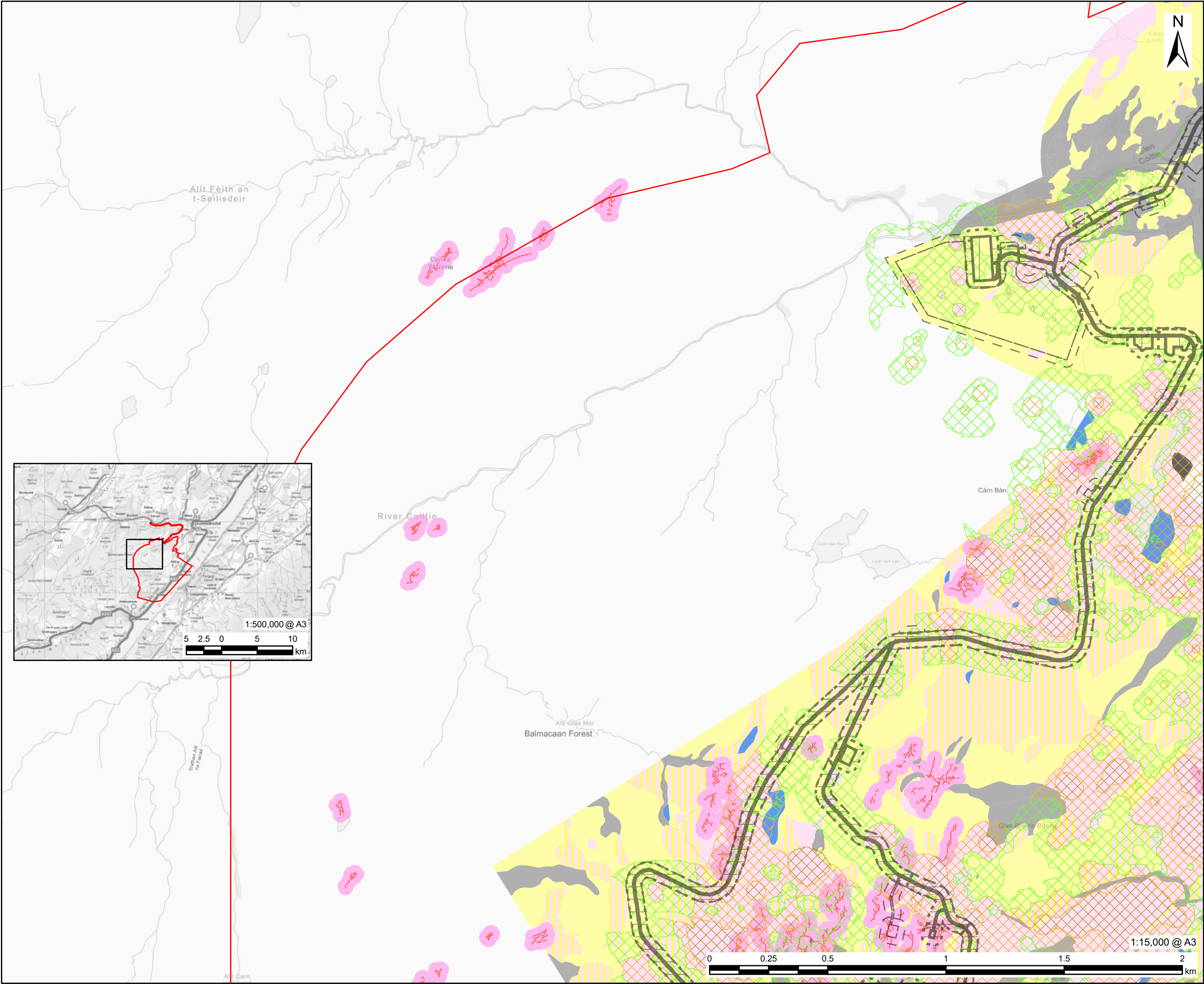
60719875

FIGURE TITLE

Peatland

FIGURE NUMBER

Figure.7.7 (Sheet 1)



AECOM

PROJECT

Glen Earrach Pumped Storage Hydro

CLIENT

Glen Earrach Energy Ltd.

CONSULTANT

AECOM Limited
177 Bothwell Street
Glasgow
G2 7ER
www.aecom.com

LEGEND

- Red Line Boundary
- Habitat loss and Indirect Modification Buffers
 - Loss - permanent
 - Indirect - permanent + Temp. loss
 - Indirect - permanent
 - Loss - temporary
 - Indirect - temporary
- Interpolated Peat Depth
 - 1 m +
 - 0.5-0.99 m
 - 0.3-0.49 m
- Peatland Action Condition Categories
 - Peatland - flat bare peat
 - Peatland - eroding - hagg or gully
 - Peatland - drained - hagg or gully
 - Peatland - modified
 - Peatland - modified / non-bog wet heath mosaic
 - Peatland - burnt
 - Peatland - near natural
 - Non-bog peatland (wet heath; locally flush/fen)
 - Non-peatland (<50% mire NVC)

NOTES

Contains OS data © Crown copyright 2025
Indicated zones of habitat loss and indirect modification are those used in calculations of habitat loss/modification in Chapter 7: Terrestrial ecology and associated appendices

ISSUE PURPOSE

FINAL

PROJECT NUMBER

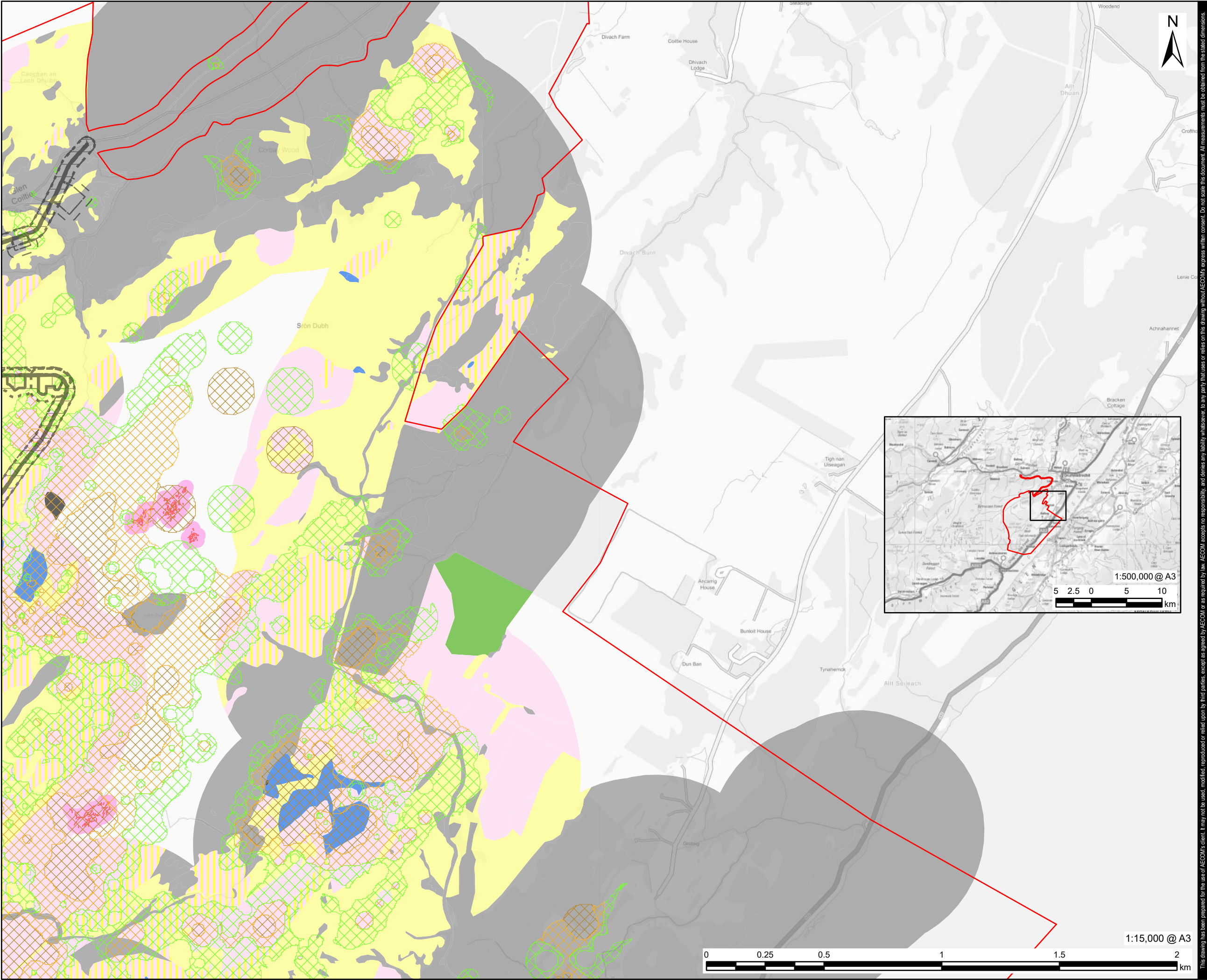
60719875

FIGURE TITLE

Peatland

FIGURE NUMBER

Figure.7.7 (Sheet 2)



AECOM

PROJECT

Glen Earrach Pumped Storage Hydro

CLIENT

Glen Earrach Energy Ltd.

CONSULTANT

AECOM Limited
177 Bothwell Street
Glasgow
G2 7ER
www.aecom.com

LEGEND

- Red Line Boundary**
- Habitat loss and Indirect Modification Buffers**
- Loss - permanent
 - Indirect - permanent + Temp. loss
 - Indirect - permanent
 - Loss - temporary
 - Indirect - temporary
- Interpolated Peat Depth**
- 1 m +
 - 0.5-0.99 m
 - 0.3-0.49 m
- Peatland Action Condition Categories**
- Peatland - eroding - hagg or gully
 - Peatland - drained - hagg or gully
 - Peatland - modified
 - Peatland - modified / non-bog wet heath mosaic
 - Peatland - conifer encroachment
 - Peatland - burnt
 - Peatland - near natural
 - Non-bog peatland (wet heath; locally flush/fen)
 - Non-peatland (<50% mire NVC)

NOTES

Contains OS data © Crown copyright 2025
Indicated zones of habitat loss and indirect modification are those used in calculations of habitat loss/modification in Chapter 7:
Terrestrial ecology and associated appendices

ISSUE PURPOSE

FINAL

PROJECT NUMBER

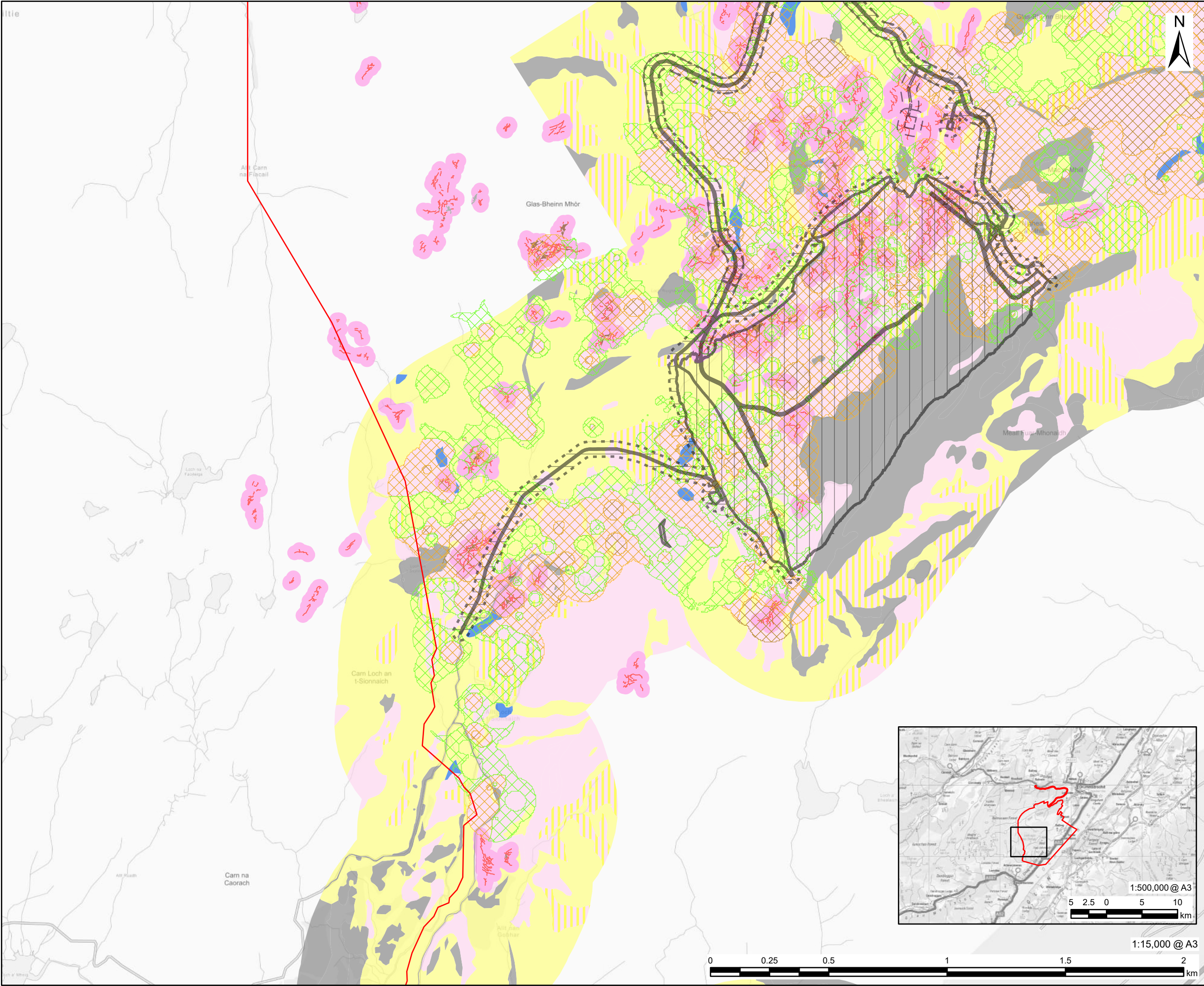
60719875

FIGURE TITLE

Peatland

FIGURE NUMBER

Figure.7.7 (Sheet 3)



This drawing has been prepared for the use of AECOM's client. It may not be used, modified, reproduced or relied upon by third parties, except as agreed by AECOM or as required by law. AECOM accepts no responsibility, and denies any liability whatsoever, to any party that uses or relies on this drawing without AECOM's express written consent. Do not scale this document. All measurements must be obtained from the stated dimensions.

AECOM

PROJECT

Glen Earrach Pumped Storage Hydro

CLIENT

Glen Earrach Energy Ltd.

CONSULTANT

AECOM Limited
177 Bothwell Street
Glasgow
G2 7ER
www.aecom.com

LEGEND

- Red Line Boundary
- Habitat loss and Indirect Modification Buffers
- Loss - permanent
 - Indirect - permanent + Temp. loss
 - Indirect - permanent
 - Loss - temporary
 - Indirect - temporary
- Interpolated Peat Depth
- 1 m +
 - 0.5-0.99 m
 - 0.3-0.49 m
- Peatland Action Condition Categories
- Peatland - flat bare peat
 - Peatland - eroding - hagg or gully
 - Peatland - drained - hagg or gully
 - Peatland - modified
 - Peatland - modified / non-bog wet heath mosaic
 - Peatland - near natural
 - Non-bog peatland (wet heath; locally flush/fen)
 - Non-peatland (<50% mire NVC)

NOTES

Contains OS data © Crown copyright 2025
Indicated zones of habitat loss and indirect modification are those used in calculations of habitat loss/modification in Chapter 7:
Terrestrial ecology and associated appendices

ISSUE PURPOSE

FINAL

PROJECT NUMBER

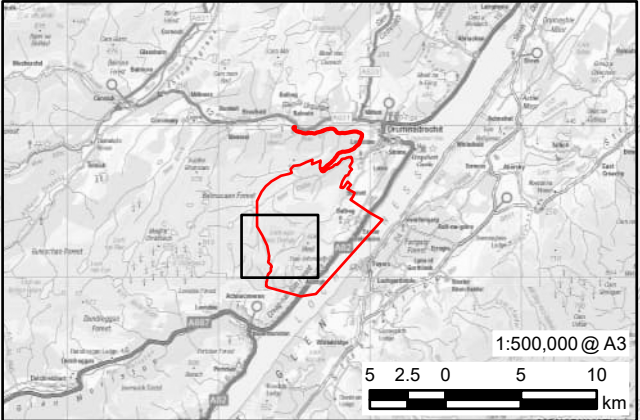
60719875

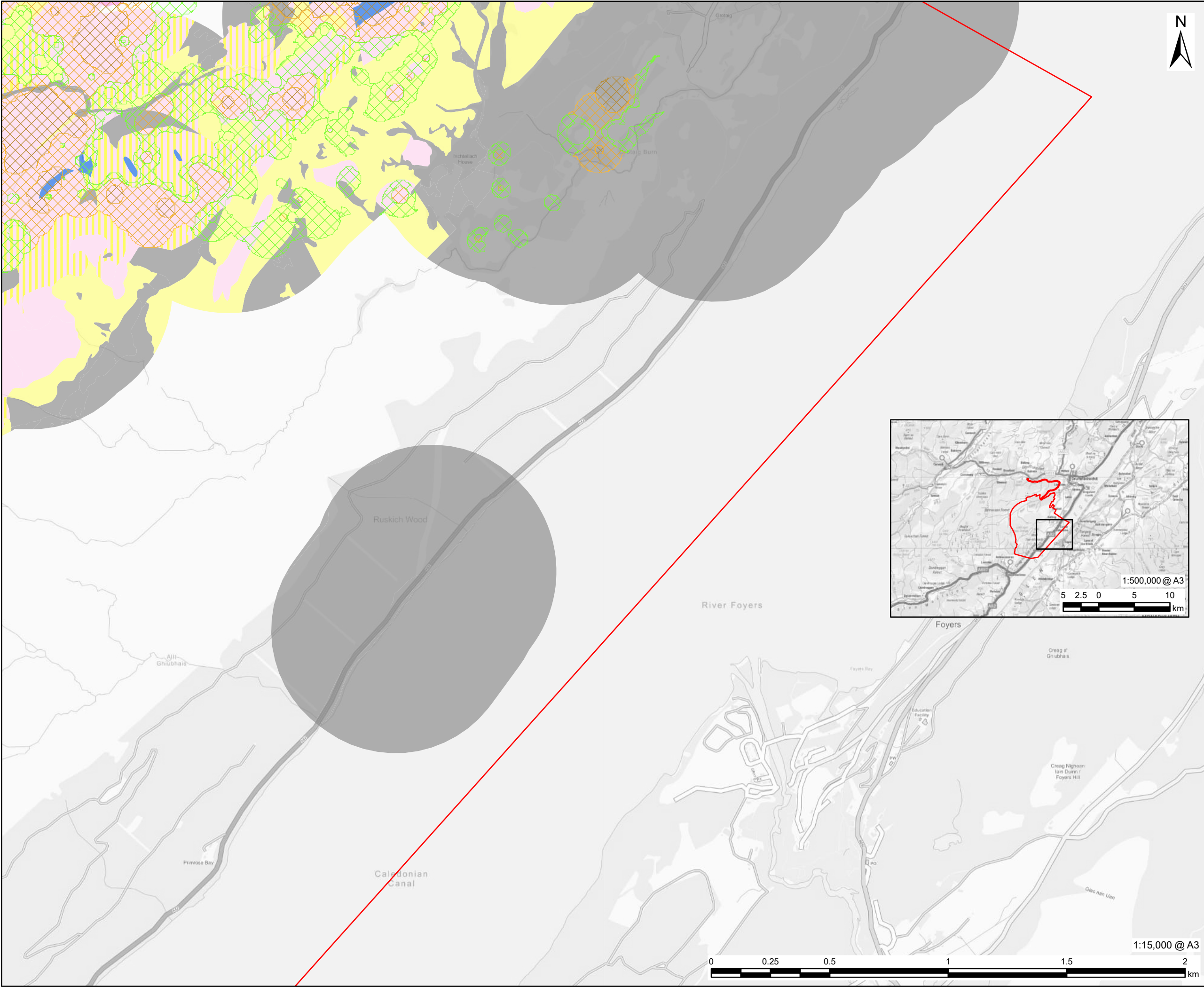
FIGURE TITLE

Peatland

FIGURE NUMBER

Figure.7.7 (Sheet 4)





This drawing has been prepared for the use of AECOM's client. It may not be used, modified, reproduced or relied upon by third parties, except as agreed by AECOM or as required by law. AECOM accepts no responsibility, and denies any liability whatsoever, to any party that uses or relies on this drawing without AECOM's express written consent. Do not scale this document. All measurements must be obtained from the stated dimensions.

AECOM

PROJECT

Glen Earrach Pumped Storage Hydro

CLIENT

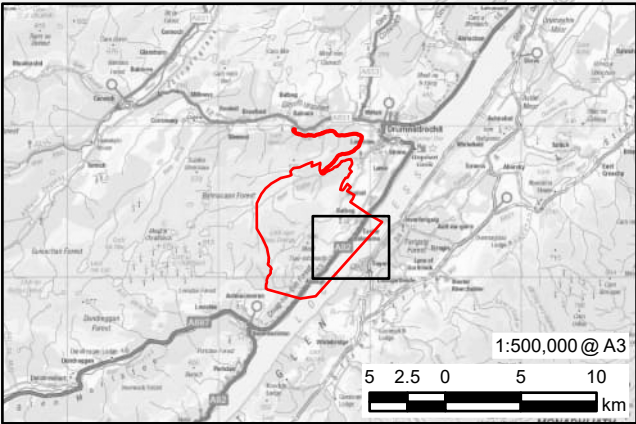
Glen Earrach Energy Ltd.

CONSULTANT

AECOM Limited
177 Bothwell Street
Glasgow
G2 7ER
www.aecom.com

LEGEND

- Red Line Boundary
- Interpolated Peat Depth
 - 1 m +
 - 0.5-0.99 m
 - 0.3-0.49 m
- Peatland Action Condition Categories
 - Peatland - drained - hagg or gully
 - Peatland - modified
 - Peatland - modified / non-bog wet heath mosaic
 - Peatland - near natural
 - Non-bog peatland (wet heath; locally flush/fen)
 - Non-peatland (<50% mire NVC)



NOTES

Contains OS data © Crown copyright 2025
Indicated zones of habitat loss and indirect modification are those used in calculations of habitat loss/modification in Chapter 7:
Terrestrial ecology and associated appendices

ISSUE PURPOSE

FINAL

PROJECT NUMBER

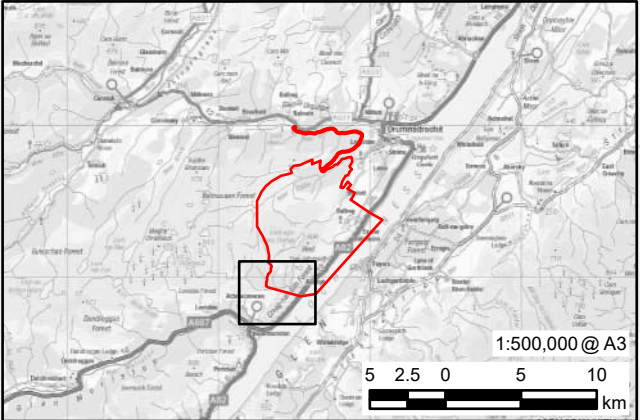
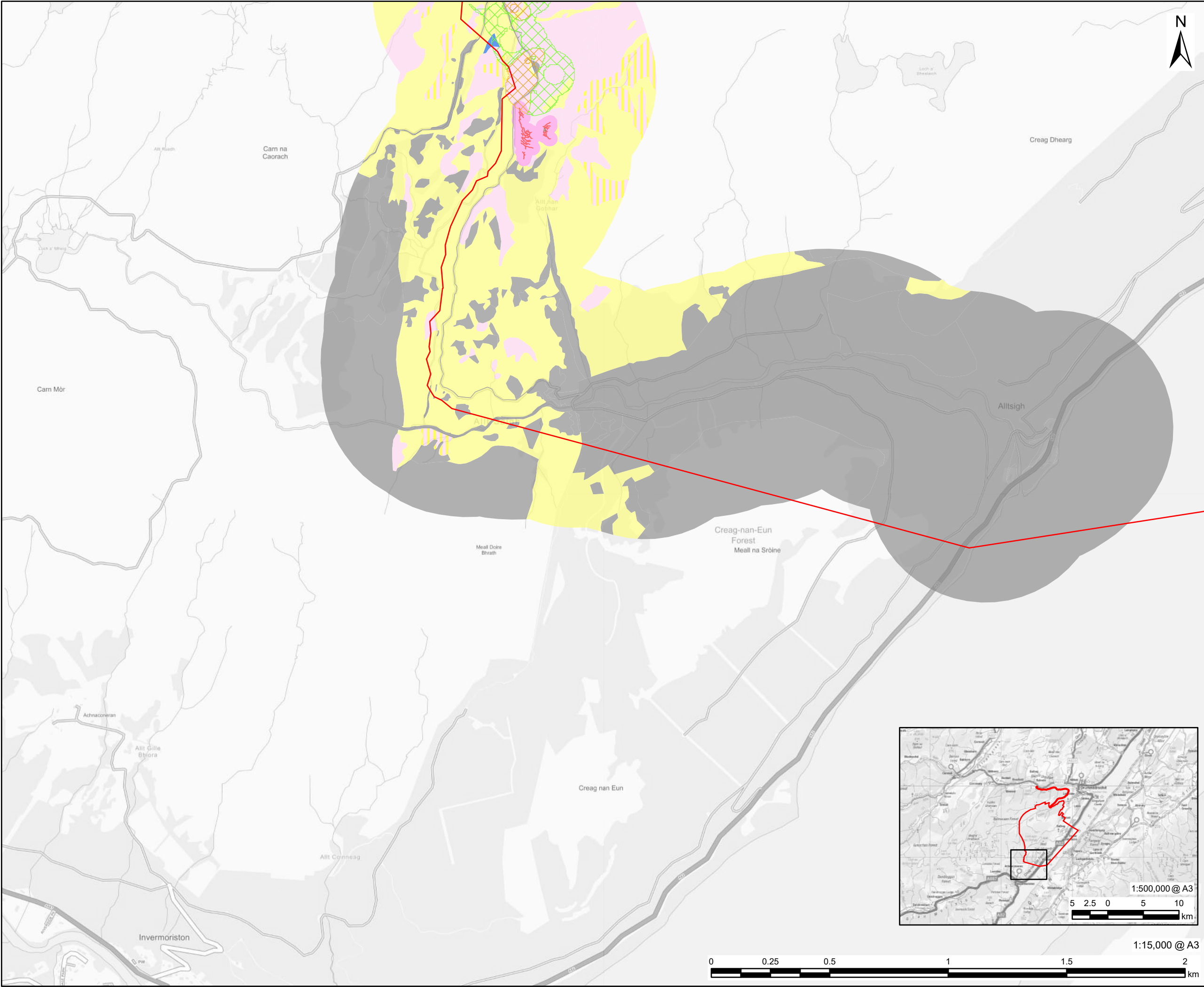
60719875

FIGURE TITLE

Peatland

FIGURE NUMBER

Figure.7.7 (Sheet 5)



AECOM

PROJECT

Glen Earrach Pumped Storage Hydro

CLIENT

Glen Earrach Energy Ltd.

CONSULTANT

AECOM Limited
177 Bothwell Street
Glasgow
G2 7ER
www.aecom.com

LEGEND

Red Line Boundary

Interpolated Peat Depth

- 1 m +
- 0.5-0.99 m
- 0.3-0.49 m

Peatland Action Condition Categories

- Peatland - flat bare peat
- Peatland - eroding - hagg or gully
- Peatland - drained - hagg or gully
- Peatland - modified
- Peatland - modified / non-bog wet heath mosaic
- Peatland - near natural
- Non-bog peatland (wet heath; locally flush/fen)
- Non-peatland (<50% mire NVC)

NOTES

Contains OS data © Crown copyright 2025
Indicated zones of habitat loss and indirect modification are those used in calculations of habitat loss/modification in Chapter 7:
Terrestrial ecology and associated appendices

ISSUE PURPOSE

FINAL

PROJECT NUMBER

60719875

FIGURE TITLE

Peatland

FIGURE NUMBER

Figure.7.7 (Sheet 6)