

AECOM

PROJECT

Glen Earrach Pumped
Storage Hydro

CLIENT

Glen Earrach Energy Ltd.

CONSULTANT

AECOM Limited
177 Bothwell Street
Glasgow
G2 7ER
www.aecom.com

LEGEND

- Red Line Boundary
- Infrastructure - Habitat Loss and Indirect Modification
 - Loss - permanent
 - Indirect - permanent
 - Loss - temporary
 - Indirect - temporary
- Dwarf birch
- Serrated wintergreen
- Interrupted clubmoss
- Notable lichen
- Target-noted species-rich basic / flushed habitat
- Sphagnum austinii
- Sphagnum fuscum
- Sphagnum medium
- Base-indicator sphagnum

NOTES

Contains OS data © Crown copyright 2025
Indicated zones of habitat loss and indirect modification are those used in calculations of habitat loss/modification in Chapter 7: Terrestrial ecology and associated appendices

ISSUE PURPOSE

FINAL

PROJECT NUMBER

60719875

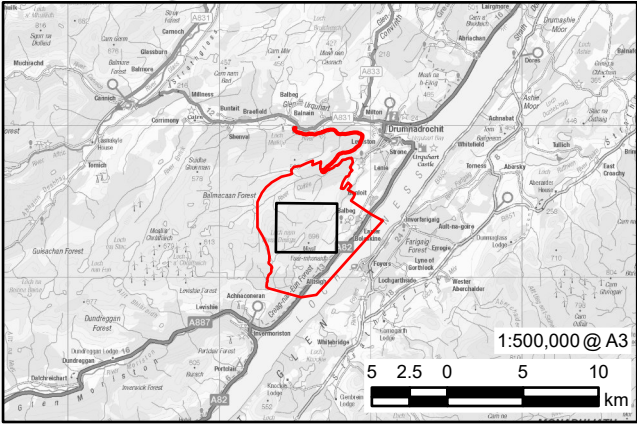
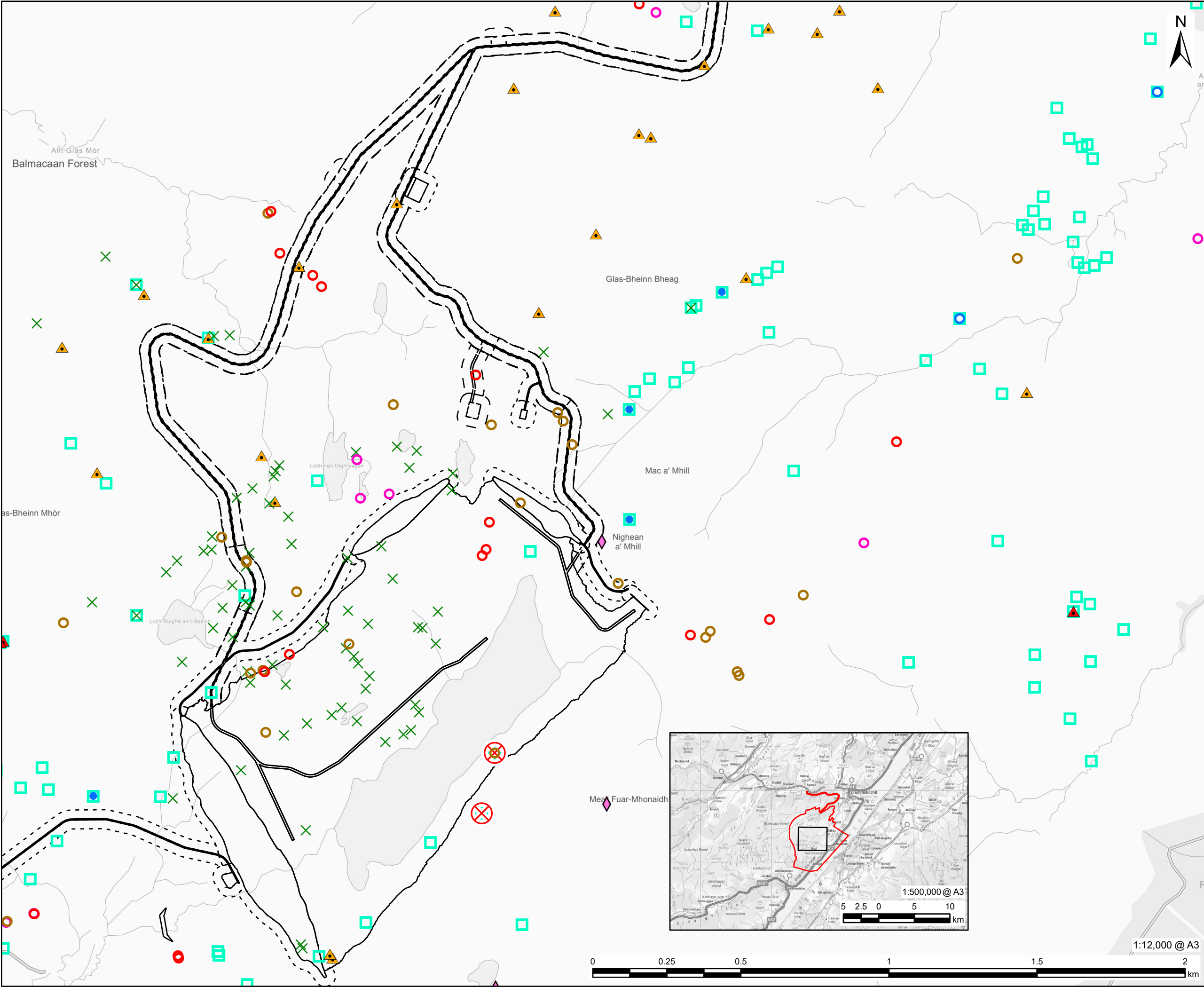
FIGURE TITLE

Notable plants and species-rich habitats

FIGURE NUMBER

Figure.7.8 (Sheet 1)

This drawing has been prepared for the use of AECOM's client. It may not be used, modified, reproduced or relied upon by third parties, except as agreed by AECOM or as required by law. AECOM accepts no responsibility, and denies any liability whatsoever, to any party that uses or relies on this drawing without AECOM's express written consent. Do not scale this document. All measurements must be obtained from the stated dimensions.



AECOM

PROJECT

Glen Earrach Pumped Storage Hydro

CLIENT

Glen Earrach Energy Ltd.

CONSULTANT

AECOM Limited
177 Bothwell Street
Glasgow
G2 7ER
www.aecom.com

LEGEND

- Red Line Boundary
- Infrastructure - Habitat Loss and Indirect Modification
 - Loss - permanent
 - Indirect - permanent
 - Loss - temporary
 - Indirect - temporary
- Whortle-leaved willow
- Dwarf birch
- Uncommon orchid species
- Interrupted clubmoss
- Drepanocladus trifarius
- Notable lichen
- Target-noted species-rich basic / flushed habitat
- Sphagnum austinii
- Sphagnum fuscum
- Sphagnum medium
- Base-indicator sphagnum

NOTES

Contains OS data © Crown copyright 2025
Indicated zones of habitat loss and indirect modification are those used in calculations of habitat loss/modification in Chapter 7: Terrestrial ecology and associated appendices

ISSUE PURPOSE

FINAL

PROJECT NUMBER

60719875

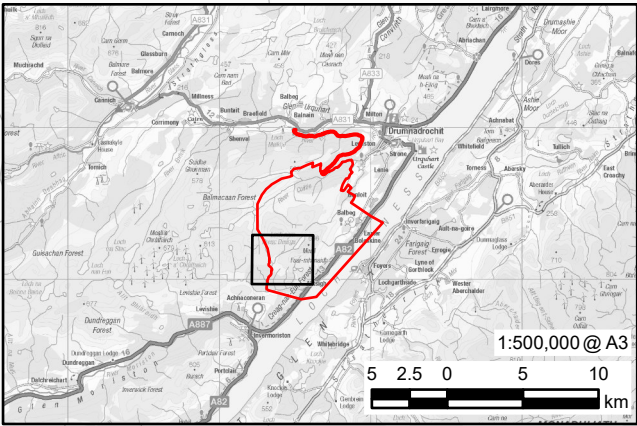
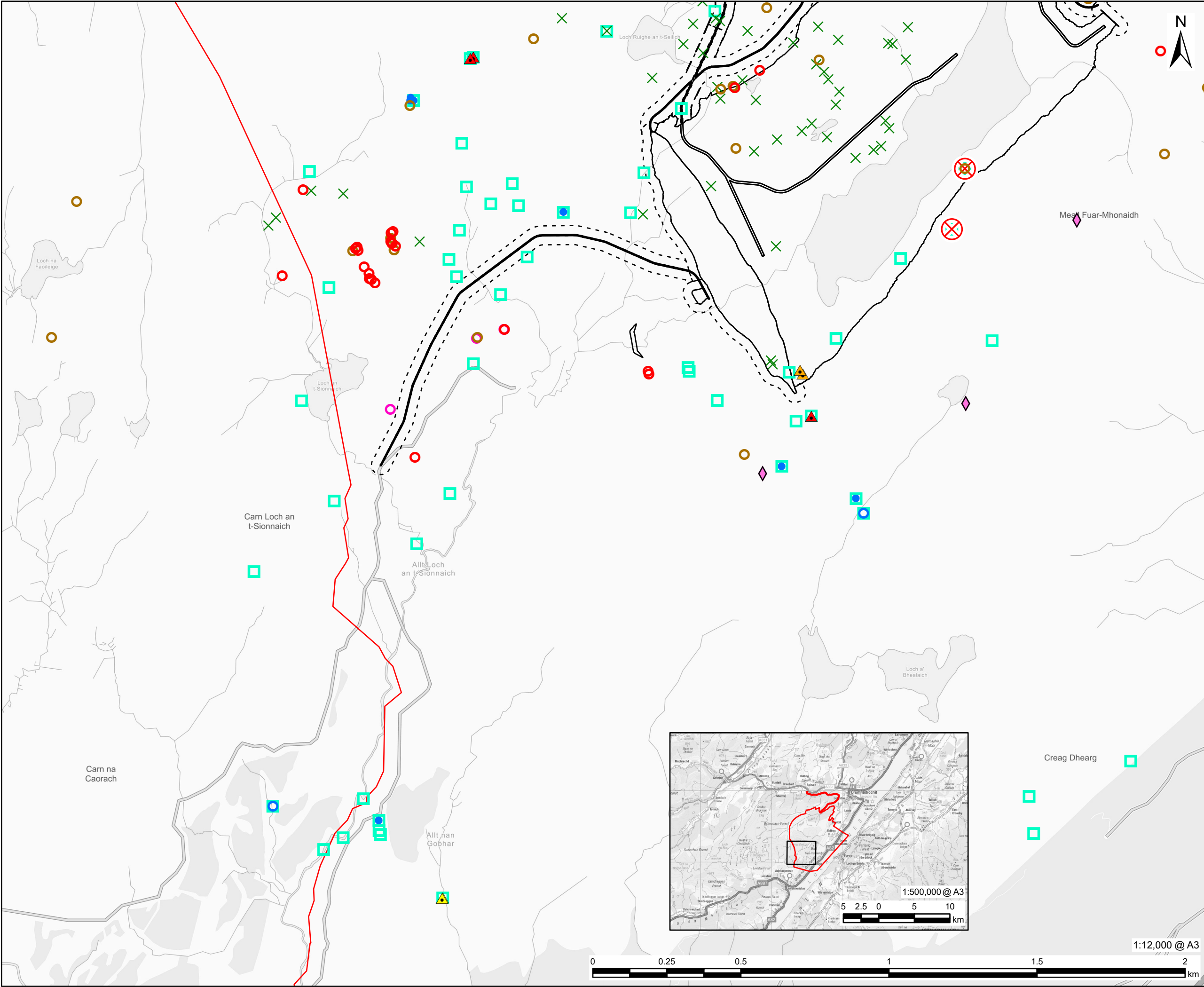
FIGURE TITLE

Notable plants and species-rich habitats

FIGURE NUMBER

Figure.7.8 (Sheet 2)

This drawing has been prepared for the use of AECOM's client. It may not be used, modified, reproduced or relied upon by third parties, except as agreed by AECOM or as required by law. AECOM accepts no responsibility, and denies any liability whatsoever, to any party that uses or relies on this drawing without AECOM's express written consent. Do not scale this document. All measurements must be obtained from the stated dimensions.



This drawing has been prepared for the use of AECOM's client. It may not be used, modified, reproduced or relied upon by third parties, except as agreed by AECOM or as required by law. AECOM accepts no responsibility, and denies any liability whatsoever, to any party that uses or relies on this drawing without AECOM's express written consent. Do not scale this document. All measurements must be obtained from the stated dimensions.

AECOM

PROJECT

Glen Earrach Pumped Storage Hydro

CLIENT

Glen Earrach Energy Ltd.

CONSULTANT

AECOM Limited
177 Bothwell Street
Glasgow
G2 7ER
www.aecom.com

LEGEND

- Red Line Boundary
- Infrastructure - Habitat Loss and Indirect Modification
 - Loss - permanent
 - Indirect - permanent
 - Indirect - temporary
- Whortle-leaved willow
- Dwarf birch
- Uncommon orchid species
- Serrated wintergreen
- Interrupted clubmoss
- Drepanocladus trifarius
- Notable lichen
- Target-noted species-rich basic / flushed habitat
- Sphagnum austinii
- Sphagnum fuscum
- Sphagnum medium
- Base-indicator sphagnum

NOTES

Contains OS data © Crown copyright 2025
Indicated zones of habitat loss and indirect modification are those used in calculations of habitat loss/modification in Chapter 7: Terrestrial ecology and associated appendices

ISSUE PURPOSE

FINAL

PROJECT NUMBER

60719875

FIGURE TITLE

Notable plants and species-rich habitats

FIGURE NUMBER

Figure.7.8 (Sheet 3)