

This drawing has been prepared for the use of AECOM's client. It may not be used, modified, reproduced or relied upon by third parties, except as agreed by AECOM or as required by law. AECOM accepts no responsibility, and denies any liability whatsoever, to any party that uses or relies on this drawing without AECOM's express written consent. Do not scale this document. All measurements must be obtained from the stated dimensions.

AECOM

PROJECT

Glen Earrach Pumped Storage Hydro

CLIENT

Glen Earrach Energy Ltd.

CONSULTANT

AECOM Limited
177 Bothwell Street
Glasgow
G2 7ER
www.aecom.com

LEGEND

 Red Line Boundary

Potential GWDTE

 High (part)

NOTES

Contains OS data © Crown copyright 2025

Indicated zones of habitat loss and indirect modification are those used in calculations of habitat loss/modification in Chapter 7: Terrestrial ecology and associated appendices

ISSUE PURPOSE

FINAL

PROJECT NUMBER

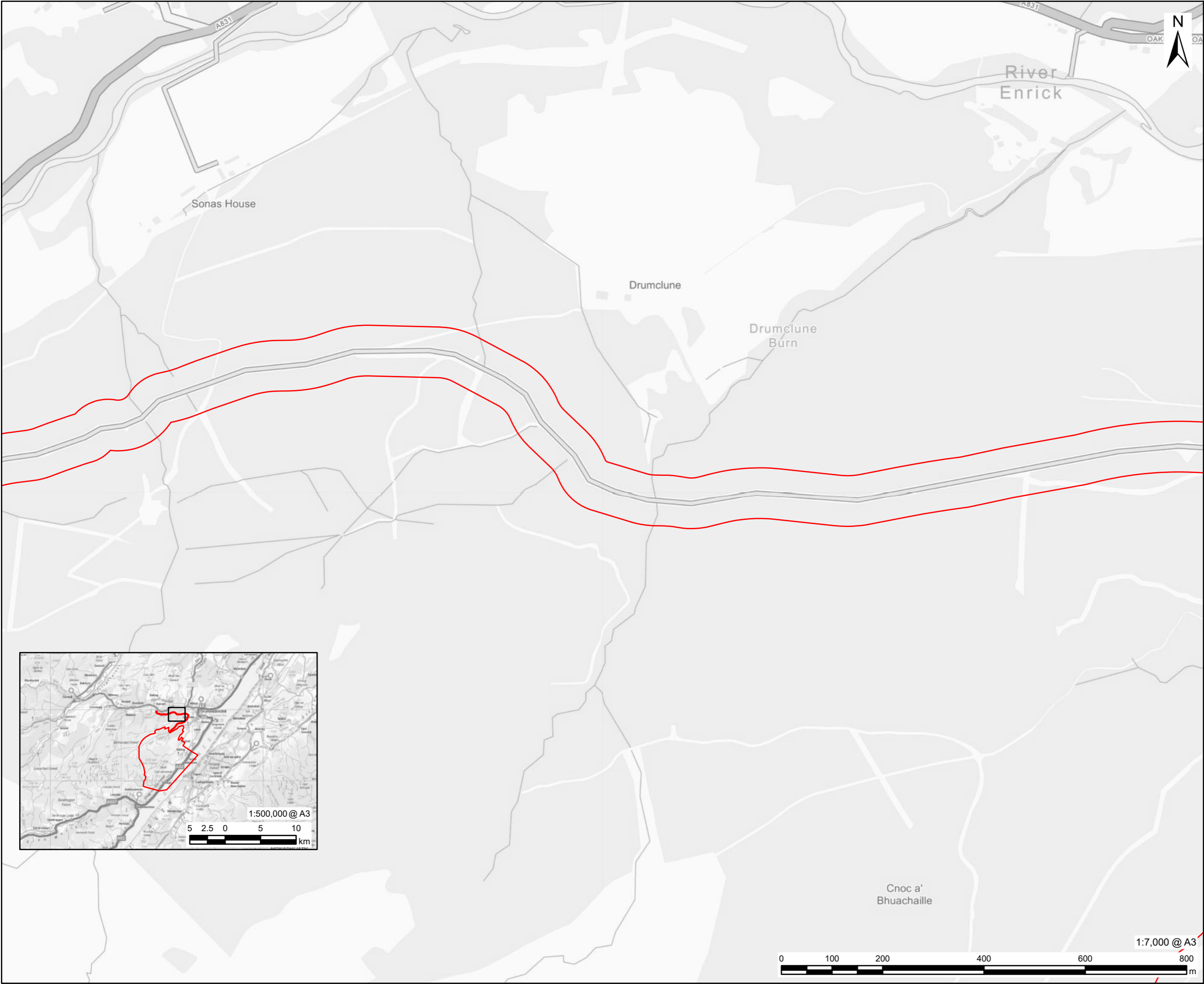
60719875

FIGURE TITLE

Potential Groundwater Dependent Terrestrial Ecosystems

FIGURE NUMBER

Figure.7.9 (Sheet 1)



AECOM

PROJECT

Glen Earrach Pumped Storage Hydro

CLIENT

Glen Earrach Energy Ltd.

CONSULTANT

AECOM Limited
177 Bothwell Street
Glasgow
G2 7ER
www.aecom.com

LEGEND

Red Line Boundary

NOTES

Contains OS data © Crown copyright 2025

Indicated zones of habitat loss and indirect modification are those used in calculations of habitat loss/modification in Chapter 7: Terrestrial ecology and associated appendices

ISSUE PURPOSE

FINAL

PROJECT NUMBER

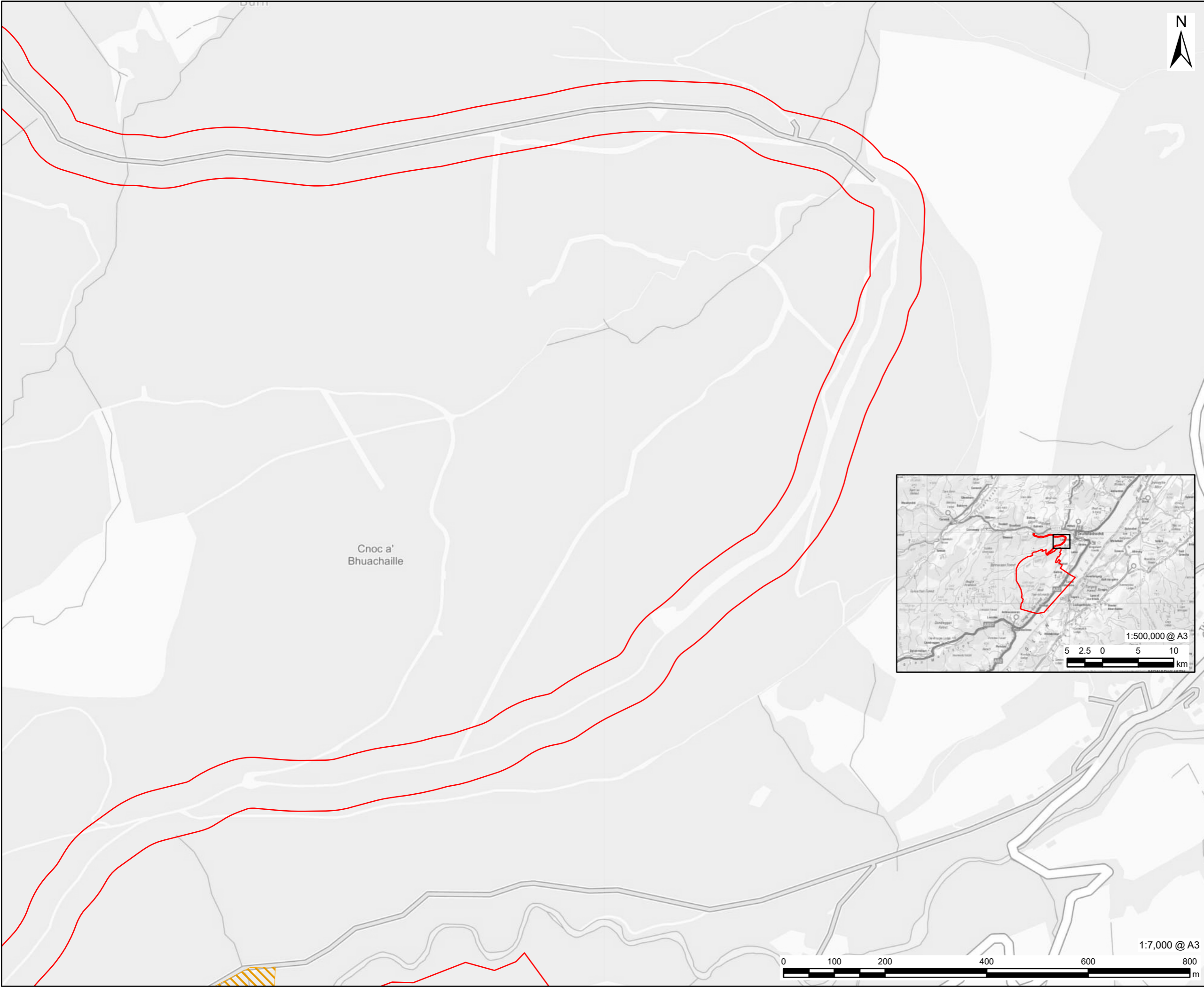
60719875

FIGURE TITLE

Potential Groundwater Dependent Terrestrial Ecosystems

FIGURE NUMBER

Figure.7.9 (Sheet 2)



AECOM

PROJECT

Glen Earrach Pumped Storage Hydro



CLIENT

Glen Earrach Energy Ltd.

CONSULTANT

AECOM Limited
177 Bothwell Street
Glasgow
G2 7ER
www.aecom.com

LEGEND

-  Red Line Boundary
-  Potential GWDTE Moderate (part)

NOTES

Contains OS data © Crown copyright 2025
Indicated zones of habitat loss and indirect modification are those used in calculations of habitat loss/modification in Chapter 7: Terrestrial ecology and associated appendices

ISSUE PURPOSE

FINAL

PROJECT NUMBER

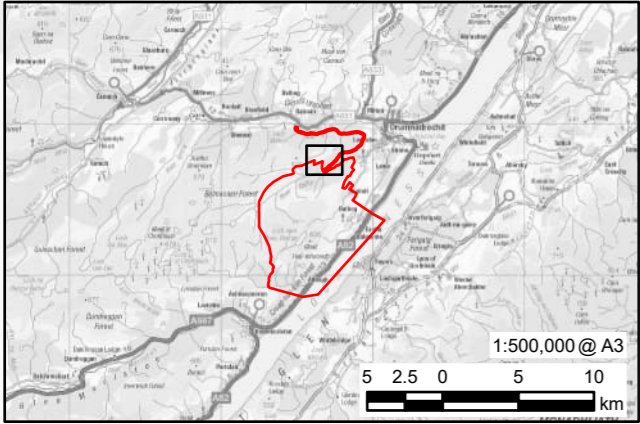
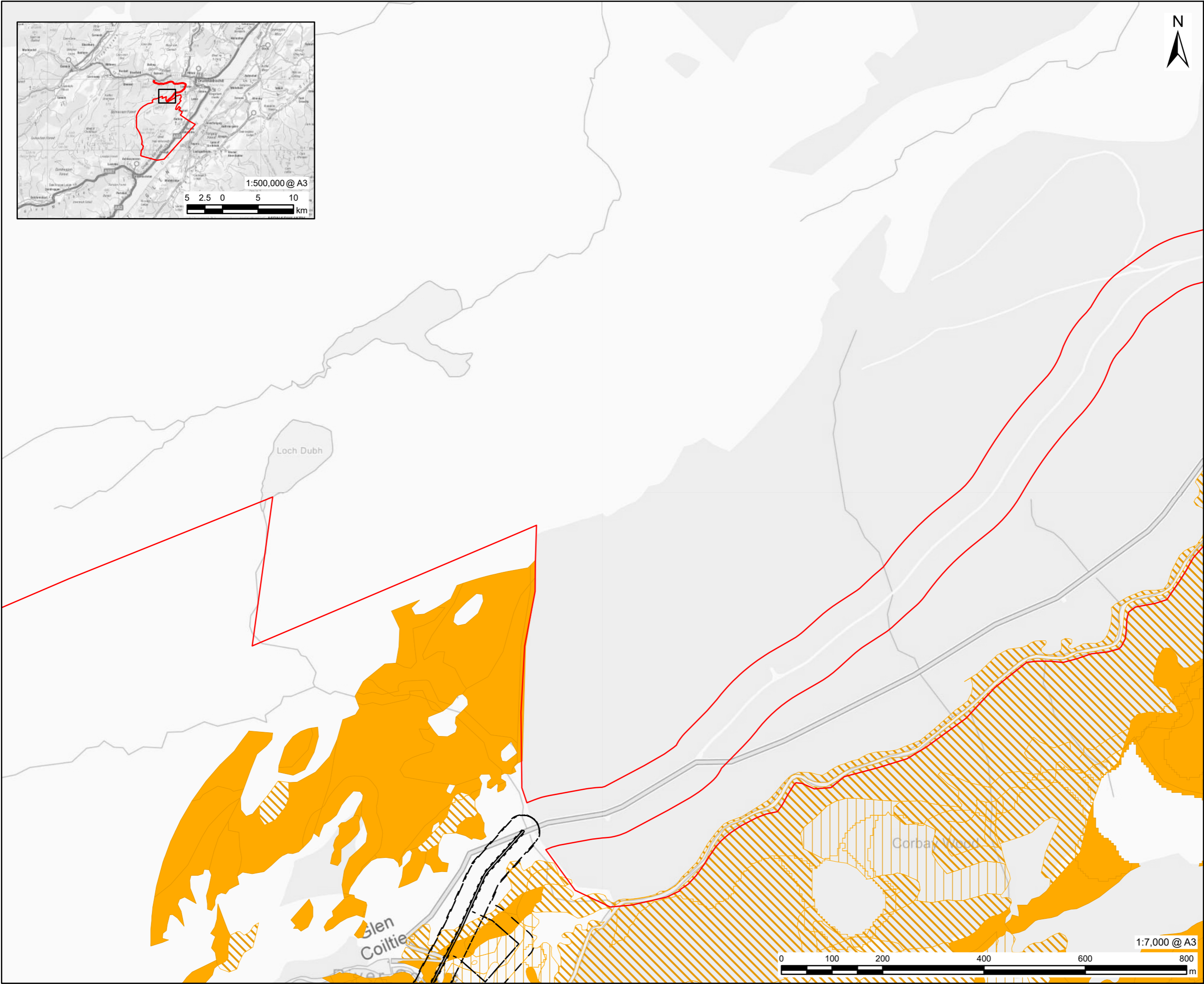
60719875

FIGURE TITLE

Potential Groundwater Dependent Terrestrial Ecosystems

FIGURE NUMBER

Figure.7.9 (Sheet 3)



This drawing has been prepared for the use of AECOM's client. It may not be used, modified, reproduced or relied upon by third parties, except as agreed by AECOM or as required by law. AECOM accepts no responsibility, and denies any liability whatsoever, to any party that uses or relies on this drawing without AECOM's express written consent. Do not scale this document. All measurements must be obtained from the stated dimensions.

AECOM

PROJECT

Glen Earrach Pumped Storage Hydro

CLIENT

Glen Earrach Energy Ltd.

CONSULTANT

AECOM Limited
177 Bothwell Street
Glasgow
G2 7ER
www.aecom.com

LEGEND

- Red Line Boundary
- Infrastructure - Habitat Loss and Indirect Modification
 - Loss - permanent
 - Indirect - permanent
 - Loss - temporary
 - Indirect - temporary
- Potential GWDTE
 - Moderate
 - Moderate (part)
 - Moderate (small part)

NOTES

Contains OS data © Crown copyright 2025
Indicated zones of habitat loss and indirect modification are those used in calculations of habitat loss/modification in Chapter 7: Terrestrial ecology and associated appendices

ISSUE PURPOSE

FINAL

PROJECT NUMBER

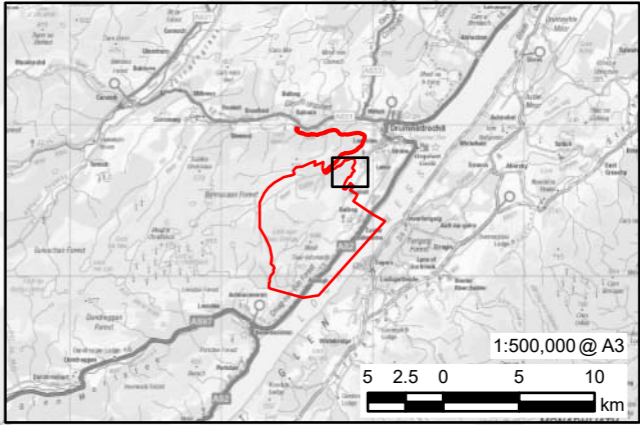
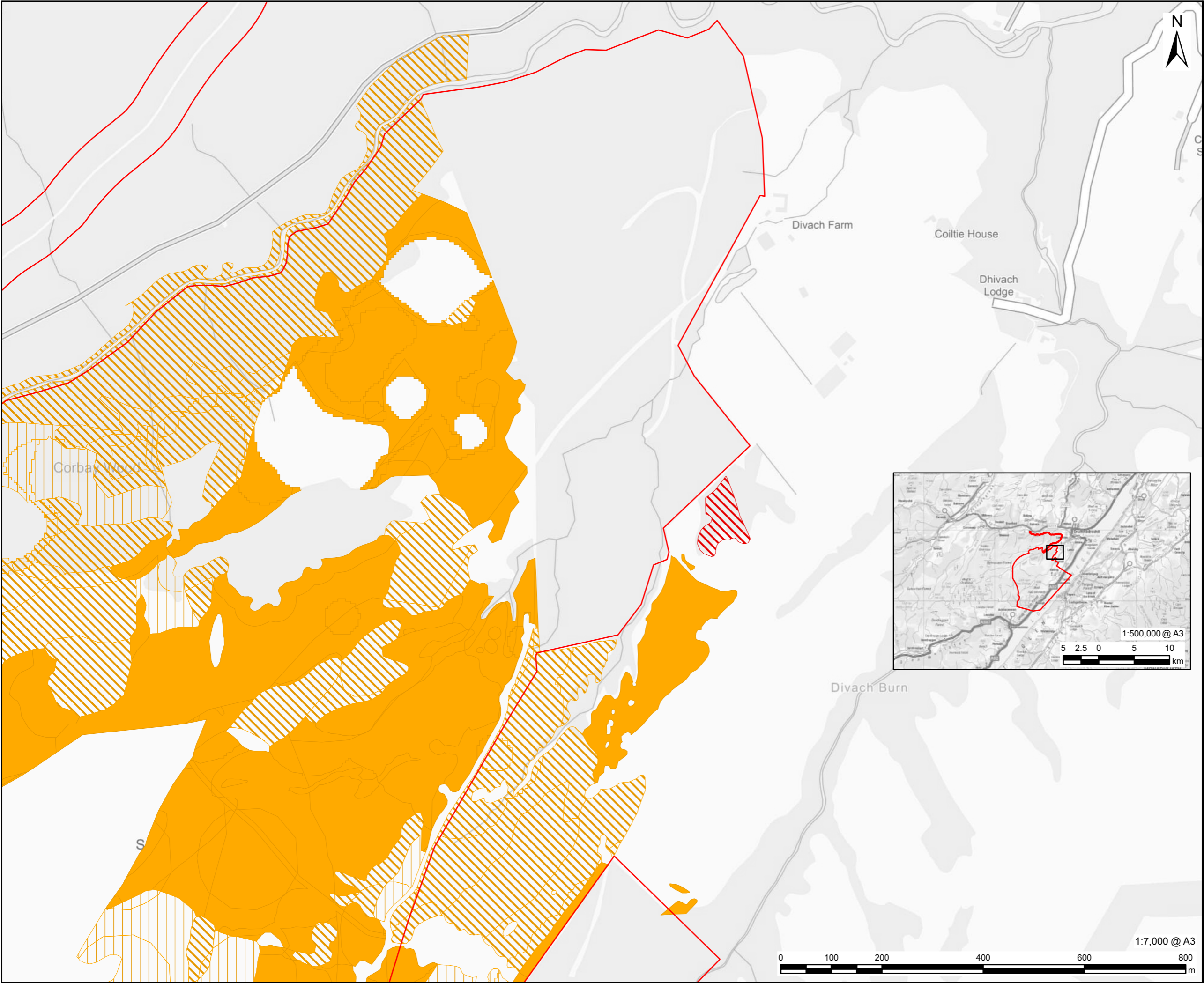
60719875

FIGURE TITLE

Potential Groundwater Dependent Terrestrial Ecosystems

FIGURE NUMBER

Figure.7.9 (Sheet 4)



This drawing has been prepared for the use of AECOM's client. It may not be used, modified, reproduced or relied upon by third parties, except as agreed by AECOM or as required by law. AECOM accepts no responsibility, and denies any liability whatsoever, to any party that uses or relies on this drawing without AECOM's express written consent. Do not scale this document. All measurements must be obtained from the stated dimensions.

AECOM

PROJECT

Glen Earrach Pumped Storage Hydro

CLIENT

Glen Earrach Energy Ltd.

CONSULTANT

AECOM Limited
177 Bothwell Street
Glasgow
G2 7ER
www.aecom.com

LEGEND

Red Line Boundary

Potential GWDTE

- High (part)
- Moderate
- Moderate (part)
- Moderate (small part)

NOTES

Contains OS data © Crown copyright 2025

Indicated zones of habitat loss and indirect modification are those used in calculations of habitat loss/modification in Chapter 7: Terrestrial ecology and associated appendices

ISSUE PURPOSE

FINAL

PROJECT NUMBER

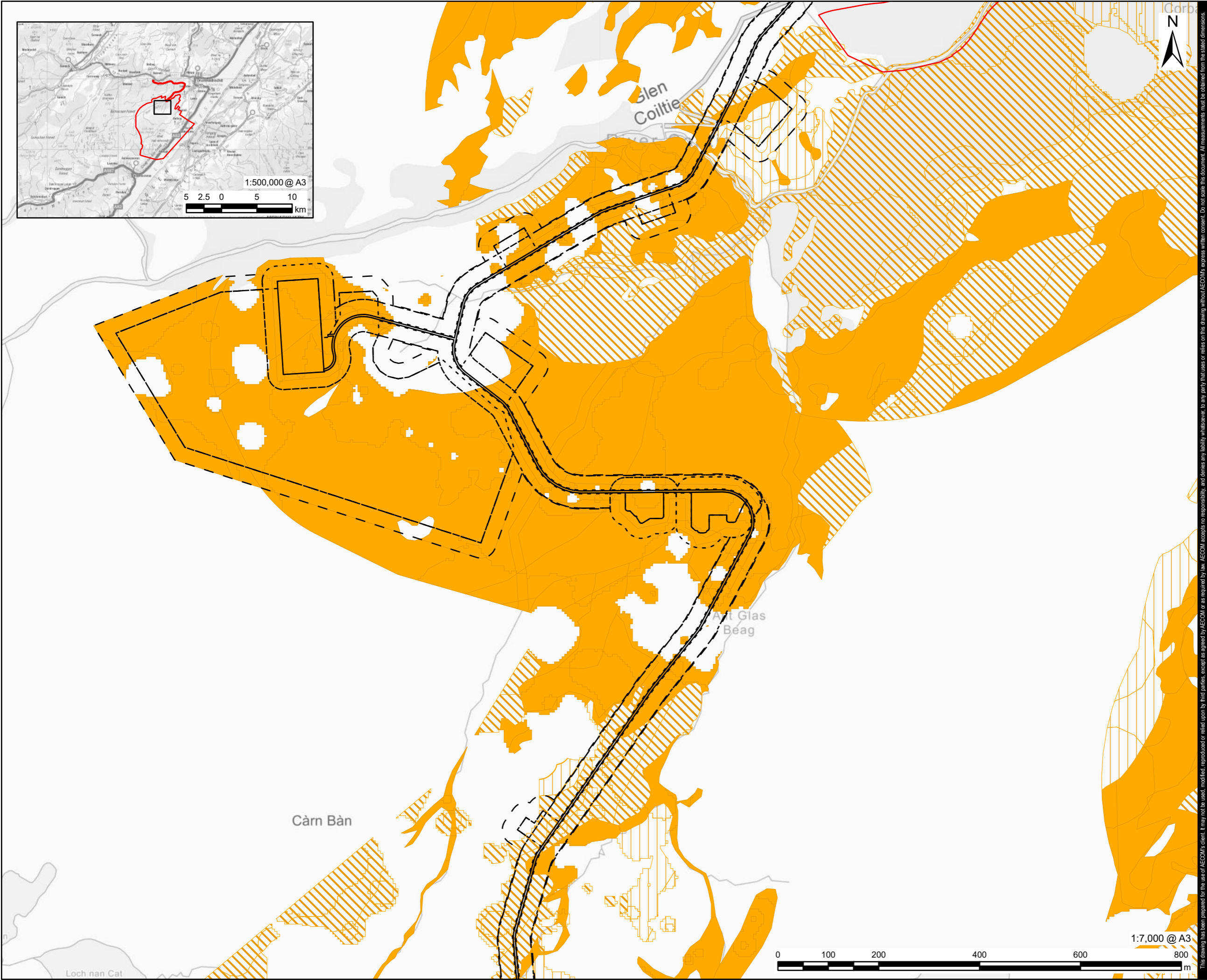
60719875

FIGURE TITLE

Potential Groundwater Dependent Terrestrial Ecosystems

FIGURE NUMBER

Figure.7.9 (Sheet 5)



AECOM

PROJECT

Glen Earrach Pumped Storage Hydro

CLIENT

Glen Earrach Energy Ltd.

CONSULTANT

AECOM Limited
177 Bothwell Street
Glasgow
G2 7ER
www.aecom.com

LEGEND

- Red Line Boundary
- Infrastructure - Habitat Loss and Indirect Modification
- Loss - permanent
 - Indirect - permanent
 - Loss - temporary
 - Indirect - temporary
- Potential GWDTE
- Moderate
 - Moderate (part)
 - Moderate (small part)

NOTES

Contains OS data © Crown copyright 2025
Indicated zones of habitat loss and indirect modification are those used in calculations of habitat loss/modification in Chapter 7: Terrestrial ecology and associated appendices

ISSUE PURPOSE

FINAL

PROJECT NUMBER

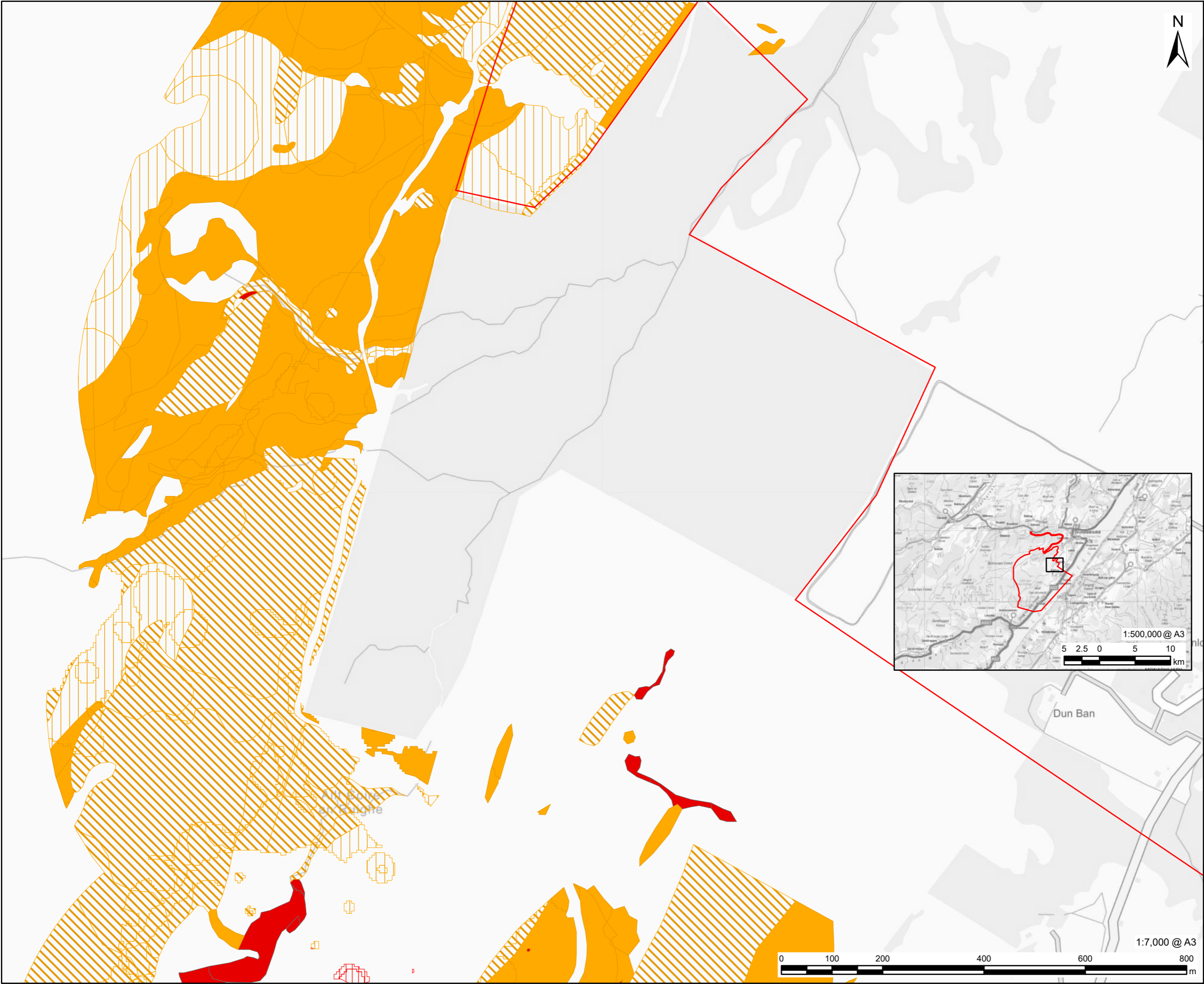
60719875

FIGURE TITLE

Potential Groundwater Dependent Terrestrial Ecosystems

FIGURE NUMBER

Figure.7.9 (Sheet 6)



This drawing has been prepared for the use of AECOM's client. It may not be used, modified, reproduced or relied upon by third parties, except as agreed by AECOM or as required by law. AECOM accepts no responsibility, and denies any liability whatsoever, to any party that uses or relies on this drawing without AECOM's express written consent. Do not scale this document. All measurements must be obtained from the stated dimensions.

AECOM

PROJECT

Glen Earrach Pumped Storage Hydro

CLIENT

Glen Earrach Energy Ltd.

CONSULTANT

AECOM Limited
177 Bothwell Street
Glasgow
G2 7ER
www.aecom.com

LEGEND

Red Line Boundary

Potential GWDTE

- High
- High (small part)
- Moderate
- Moderate (part)
- Moderate (small part)

NOTES

Contains OS data © Crown copyright 2025

Indicated zones of habitat loss and indirect modification are those used in calculations of habitat loss/modification in Chapter 7: Terrestrial ecology and associated appendices

ISSUE PURPOSE

FINAL

PROJECT NUMBER

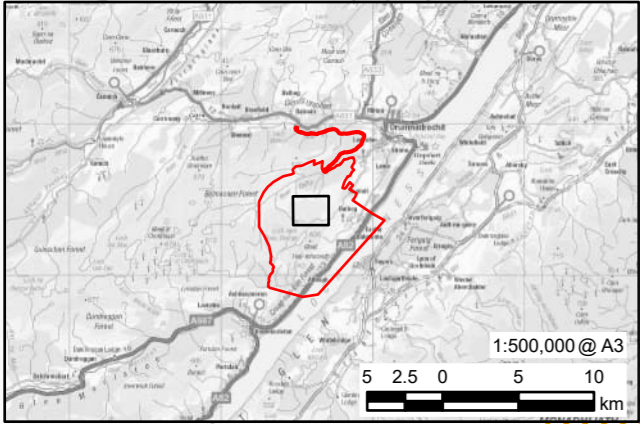
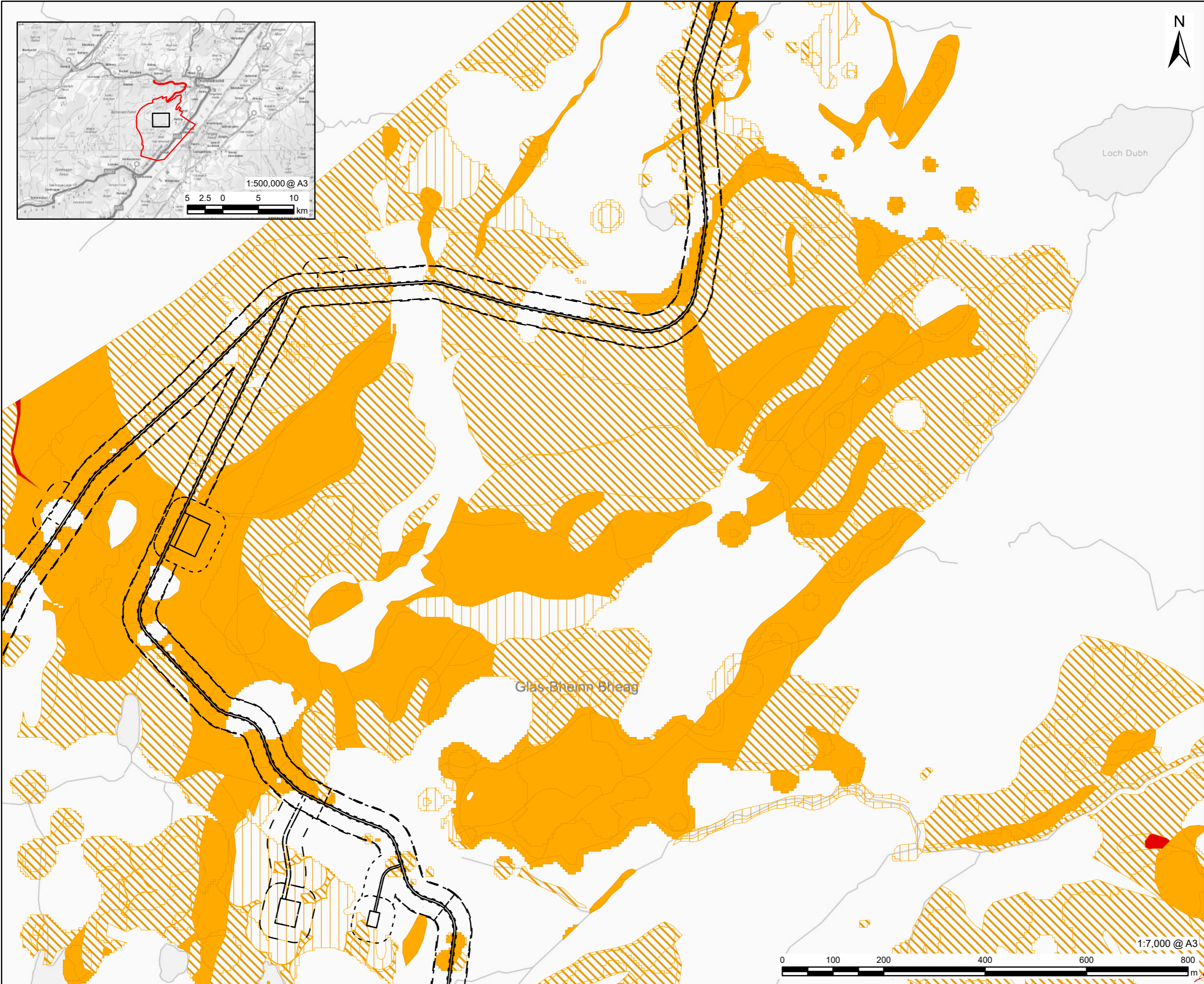
60719875

FIGURE TITLE

Potential Groundwater Dependent Terrestrial Ecosystems

FIGURE NUMBER

Figure.7.9 (Sheet 7)



AECOM

PROJECT

Glen Earrach Pumped Storage Hydro

CLIENT

Glen Earrach Energy Ltd.

CONSULTANT

AECOM Limited
177 Bothwell Street
Glasgow
G2 7ER
www.aecom.com

LEGEND

- Red Line Boundary
- Infrastructure - Habitat Loss and Indirect Modification
 - Loss - permanent
 - Indirect - permanent
 - Loss - temporary
 - Indirect - temporary
- Potential GWDTE
 - High
 - High (part)
 - Moderate
 - Moderate (part)
 - Moderate (small part)

NOTES

Contains OS data © Crown copyright 2025
Indicated zones of habitat loss and indirect modification are those used in calculations of habitat loss/modification in Chapter 7: Terrestrial ecology and associated appendices

ISSUE PURPOSE

FINAL

PROJECT NUMBER

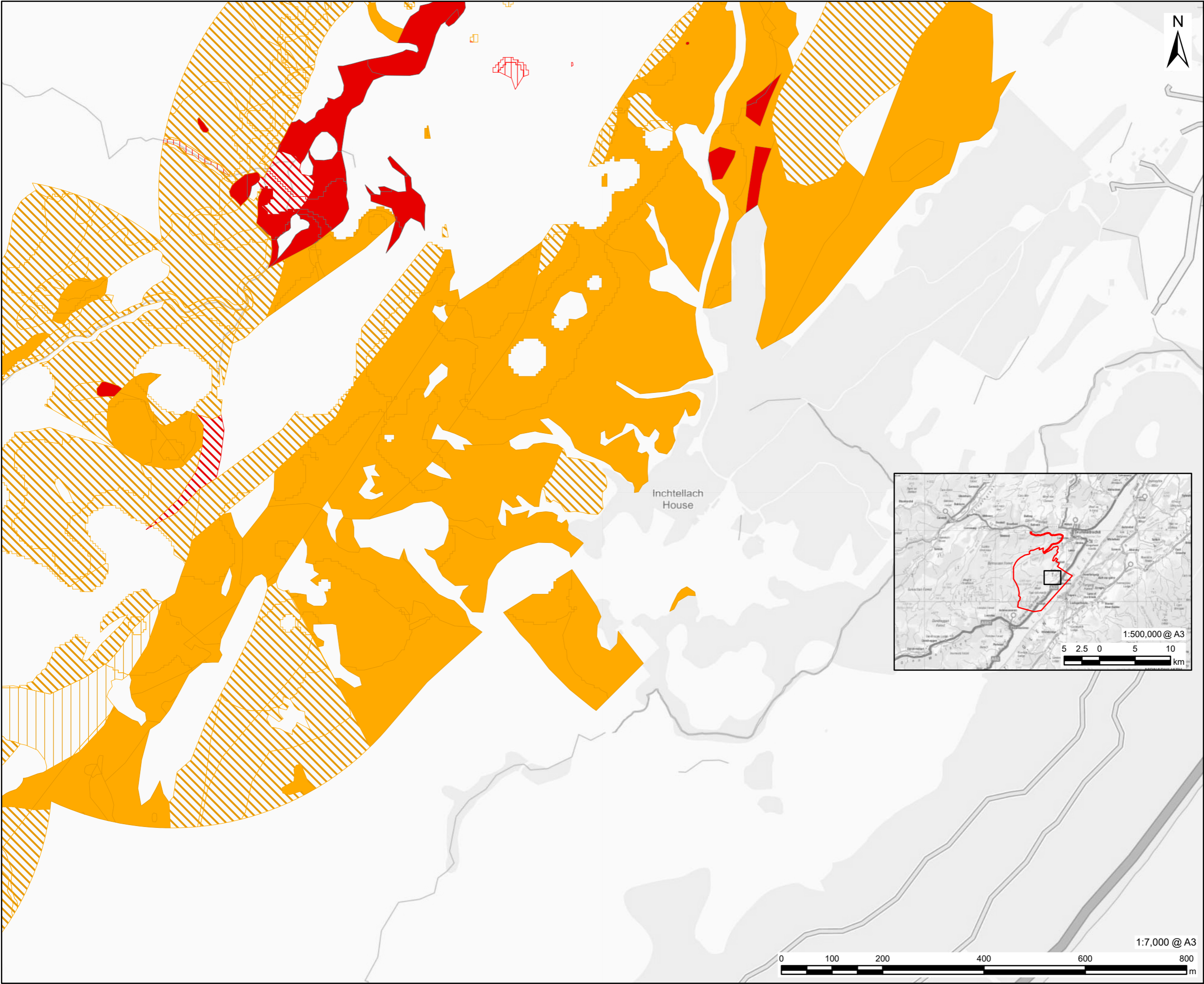
60719875

FIGURE TITLE

Potential Groundwater Dependent Terrestrial Ecosystems

FIGURE NUMBER

Figure.7.9 (Sheet 8)



AECOM

PROJECT

Glen Earrach Pumped
Storage Hydro

CLIENT

Glen Earrach Energy Ltd.

CONSULTANT

AECOM Limited
177 Bothwell Street
Glasgow
G2 7ER
www.aecom.com

LEGEND

- Red Line Boundary
- Potential GWDTE
- High
 - High (part)
 - High (small part)
 - Moderate
 - Moderate (part)
 - Moderate (small part)

NOTES

Contains OS data © Crown copyright
2025
Indicated zones of habitat loss and
indirect modification are those used in
calculations of habitat loss/modification
in Chapter 7: Terrestrial ecology and
associated appendices

ISSUE PURPOSE

FINAL

PROJECT NUMBER

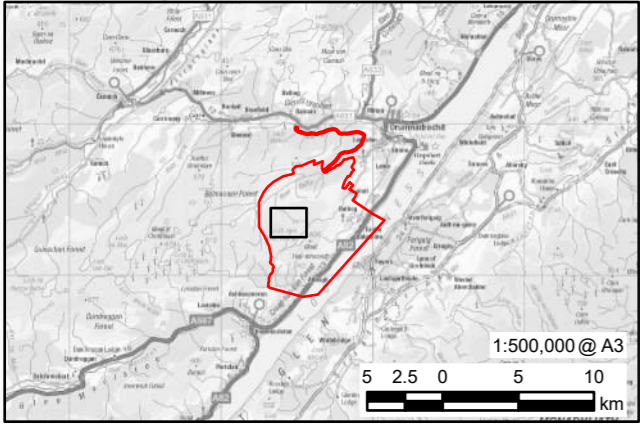
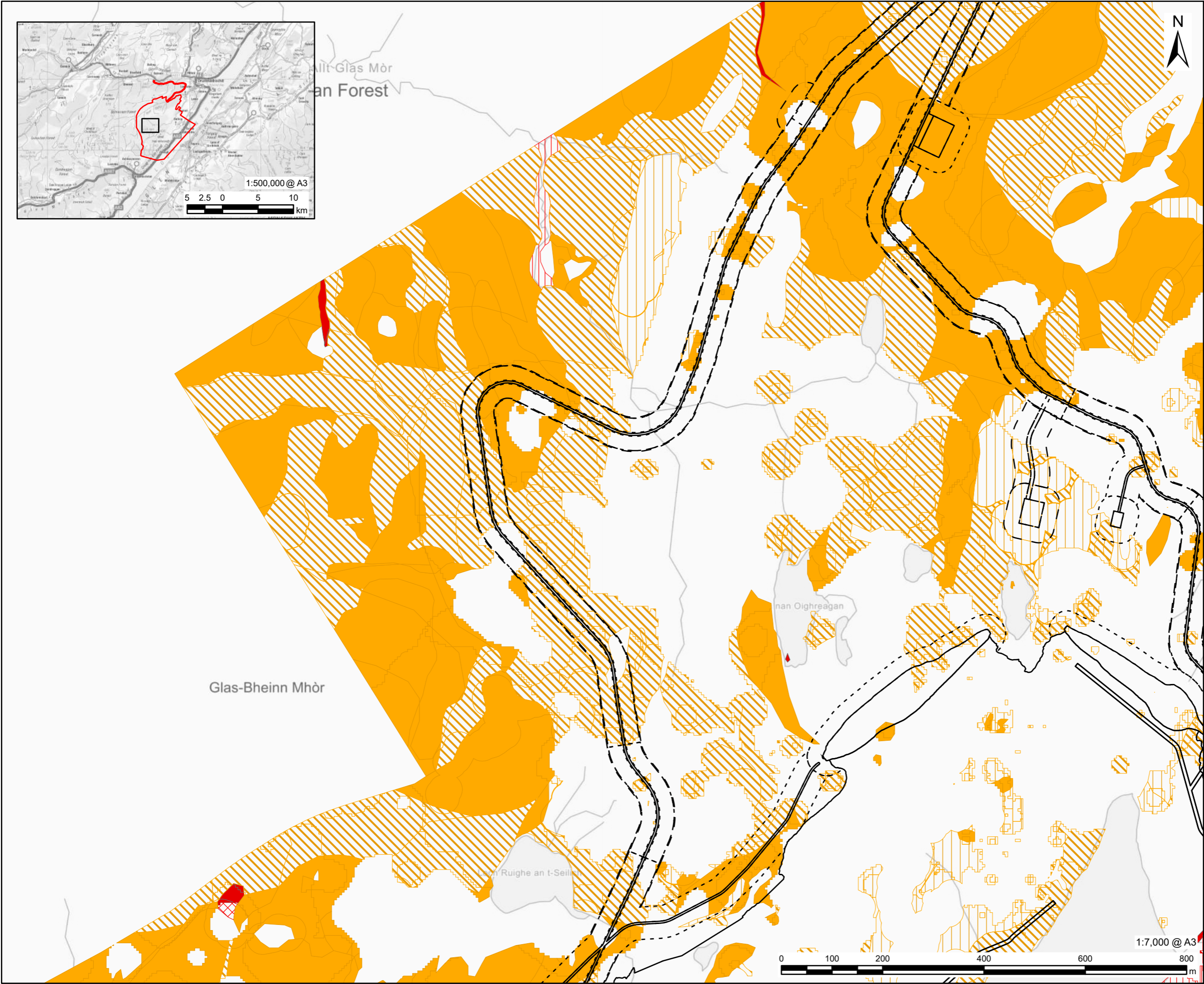
60719875

FIGURE TITLE

Potential Groundwater Dependent
Terrestrial Ecosystems

FIGURE NUMBER

Figure.7.9 (Sheet 9)



AECOM

PROJECT

Glen Earrach Pumped
Storage Hydro

CLIENT

Glen Earrach Energy Ltd.

CONSULTANT

AECOM Limited
177 Bothwell Street
Glasgow
G2 7ER
www.aecom.com

LEGEND

- Red Line Boundary
- Infrastructure - Habitat Loss and Indirect Modification
 - Loss - permanent
 - Indirect - permanent
 - Loss - temporary
 - Indirect - temporary
- Potential GWDTE
 - High
 - High / Moderate
 - High (part)
 - High (small part)
 - Moderate
 - Moderate (part)
 - Moderate (small part)

NOTES

Contains OS data © Crown copyright
2025
Indicated zones of habitat loss and
indirect modification are those used in
calculations of habitat loss/modification
in Chapter 7: Terrestrial ecology and
associated appendices

ISSUE PURPOSE

FINAL

PROJECT NUMBER

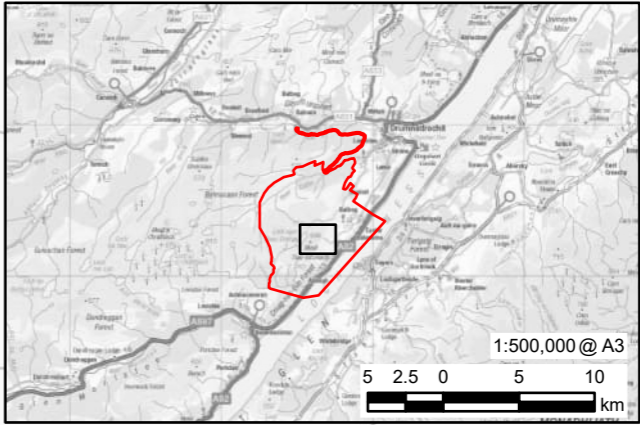
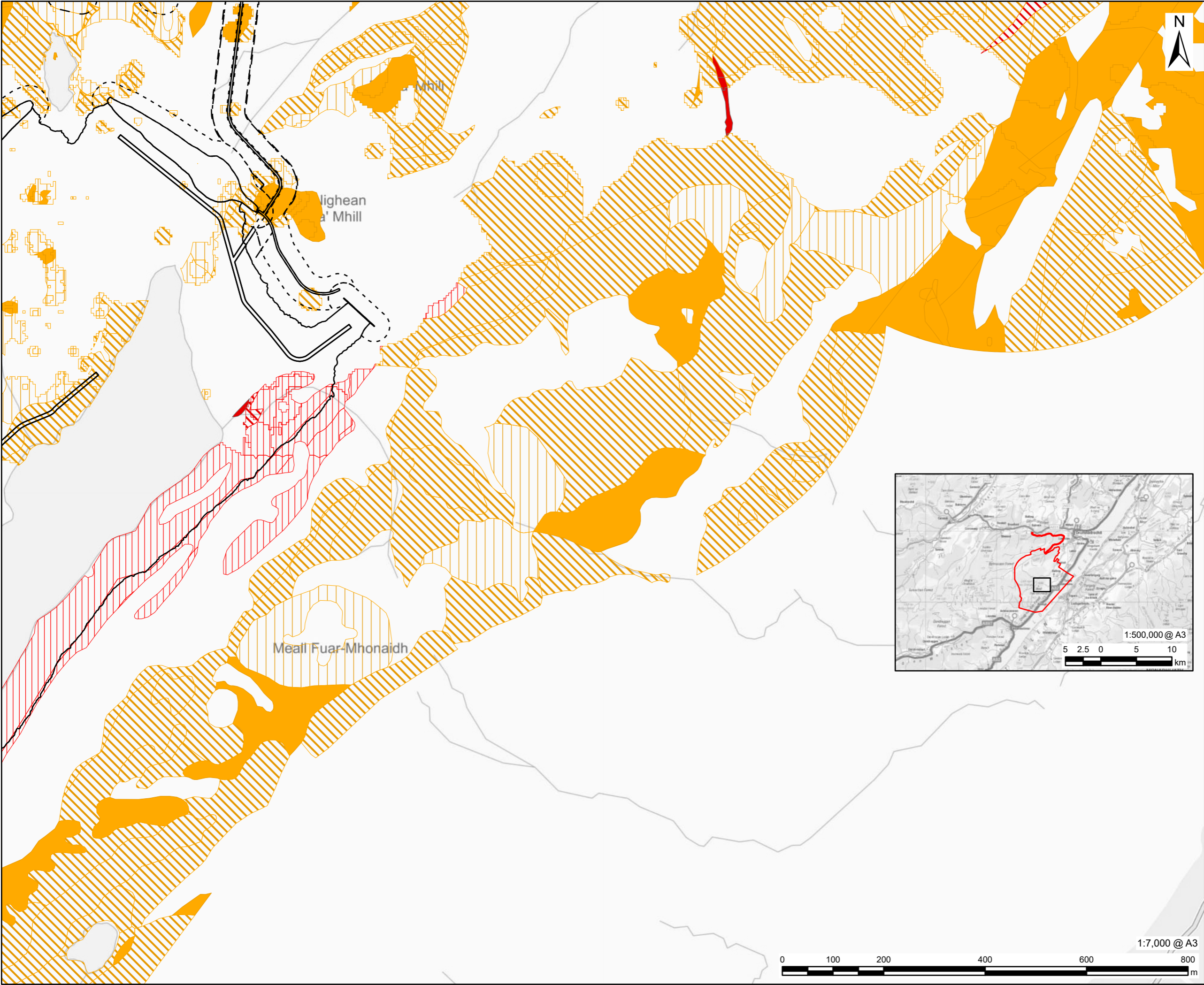
60719875

FIGURE TITLE

Potential Groundwater Dependent
Terrestrial Ecosystems

FIGURE NUMBER

Figure.7.9 (Sheet 10)



AECOM

PROJECT

Glen Earrach Pumped Storage Hydro

CLIENT

Glen Earrach Energy Ltd.

CONSULTANT

AECOM Limited
177 Bothwell Street
Glasgow
G2 7ER
www.aecom.com

LEGEND

- Red Line Boundary
- Infrastructure - Habitat Loss and Indirect Modification
 - Loss - permanent
 - Indirect - permanent
 - Loss - temporary
 - Indirect - temporary
- Potential GWDTE
 - High
 - High (part)
 - High (small part)
 - Moderate
 - Moderate (part)
 - Moderate (small part)

NOTES

Contains OS data © Crown copyright 2025
Indicated zones of habitat loss and indirect modification are those used in calculations of habitat loss/modification in Chapter 7: Terrestrial ecology and associated appendices

ISSUE PURPOSE

FINAL

PROJECT NUMBER

60719875

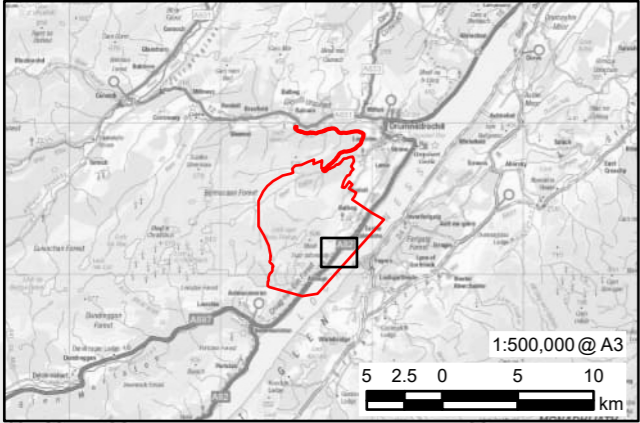
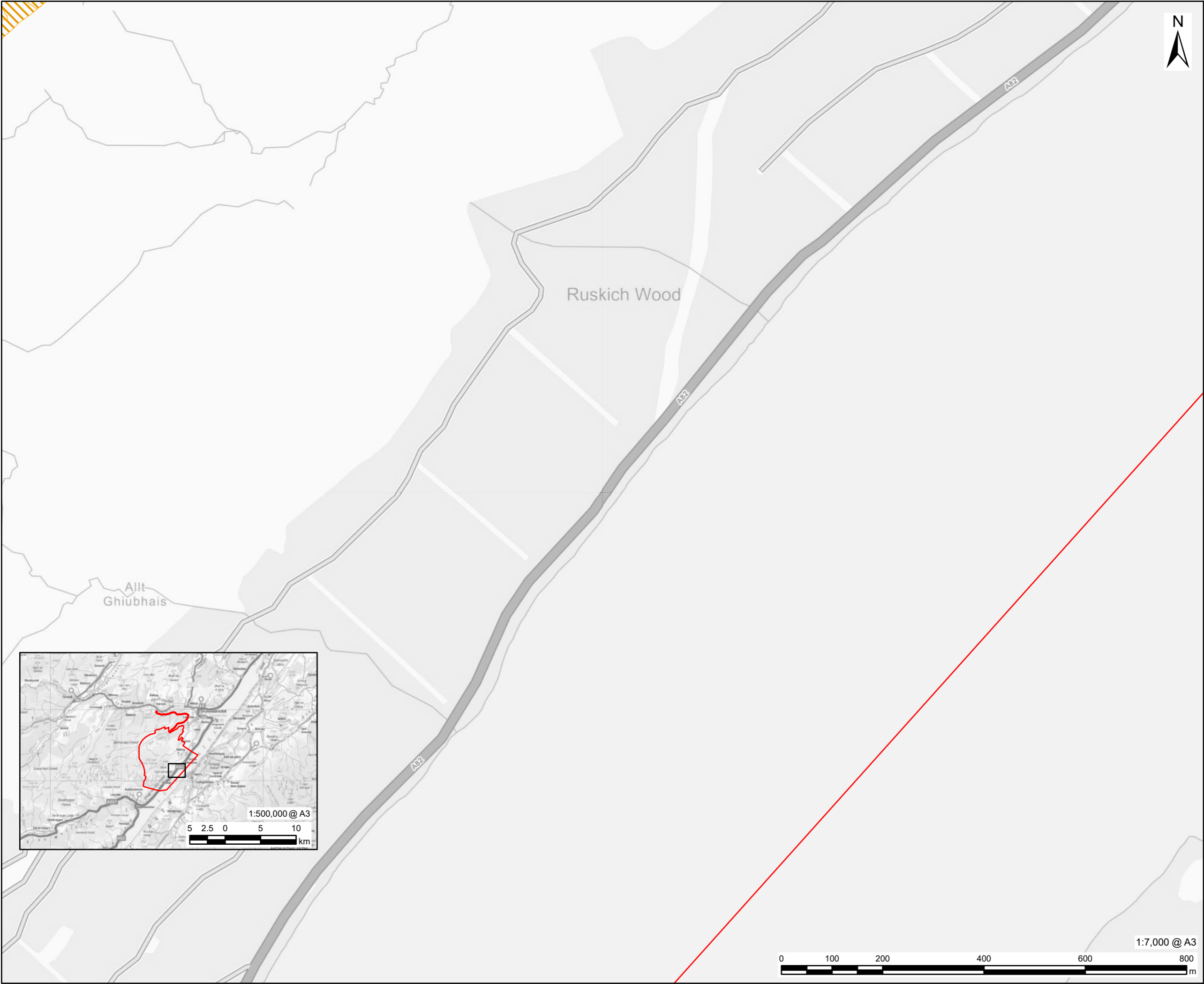
FIGURE TITLE

Potential Groundwater Dependent Terrestrial Ecosystems

FIGURE NUMBER

Figure.7.9 (Sheet 11)





This drawing has been prepared for the use of AECOM's client. It may not be used, modified, reproduced or relied upon by third parties, except as agreed by AECOM or as required by law. AECOM accepts no responsibility, and denies any liability whatsoever, to any party that uses or relies on this drawing without AECOM's express written consent. Do not scale this document. All measurements must be obtained from the stated dimensions.

AECOM

PROJECT

Glen Earrach Pumped Storage Hydro




CLIENT

Glen Earrach Energy Ltd.

CONSULTANT

AECOM Limited
177 Bothwell Street
Glasgow
G2 7ER
www.aecom.com

LEGEND

-  Red Line Boundary
-  Potential GWDTE
-  Moderate (part)

NOTES

Contains OS data © Crown copyright 2025
Indicated zones of habitat loss and indirect modification are those used in calculations of habitat loss/modification in Chapter 7: Terrestrial ecology and associated appendices

ISSUE PURPOSE

FINAL

PROJECT NUMBER

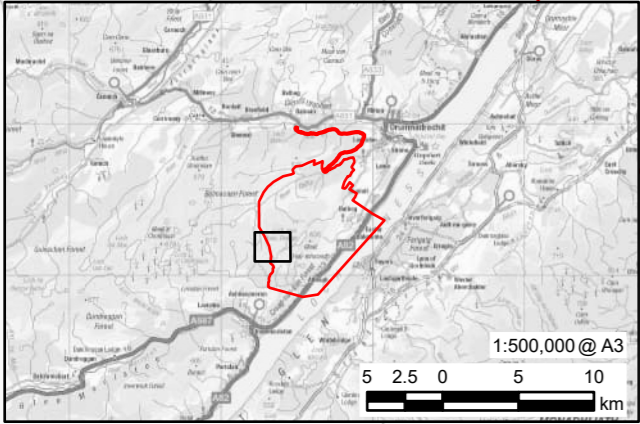
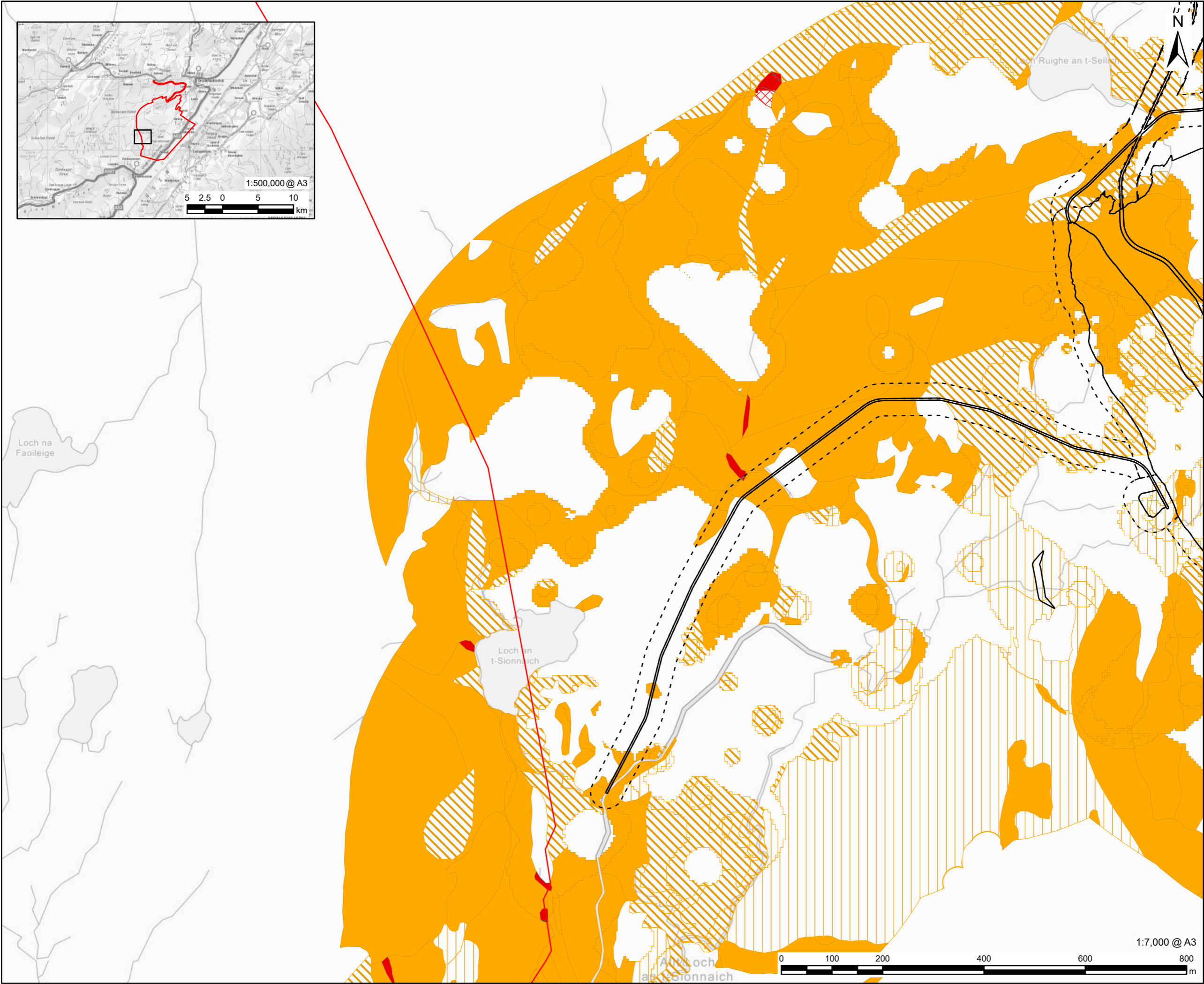
60719875

FIGURE TITLE

Potential Groundwater Dependent Terrestrial Ecosystems

FIGURE NUMBER

Figure.7.9 (Sheet 12)



AECOM

PROJECT

Glen Earrach Pumped Storage Hydro

CLIENT

Glen Earrach Energy Ltd.

CONSULTANT

AECOM Limited
177 Bothwell Street
Glasgow
G2 7ER
www.aecom.com

LEGEND

- Red Line Boundary
- Infrastructure - Habitat Loss and Indirect Modification
 - Loss - permanent
 - Indirect - permanent
 - Indirect - temporary
- Potential GWDTE
 - High
 - High / Moderate
 - Moderate
 - Moderate (part)
 - Moderate (small part)

NOTES

Contains OS data © Crown copyright 2025
Indicated zones of habitat loss and indirect modification are those used in calculations of habitat loss/modification in Chapter 7: Terrestrial ecology and associated appendices

ISSUE PURPOSE

FINAL

PROJECT NUMBER

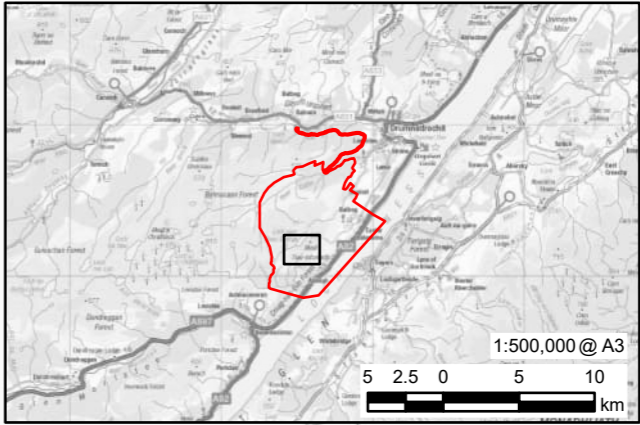
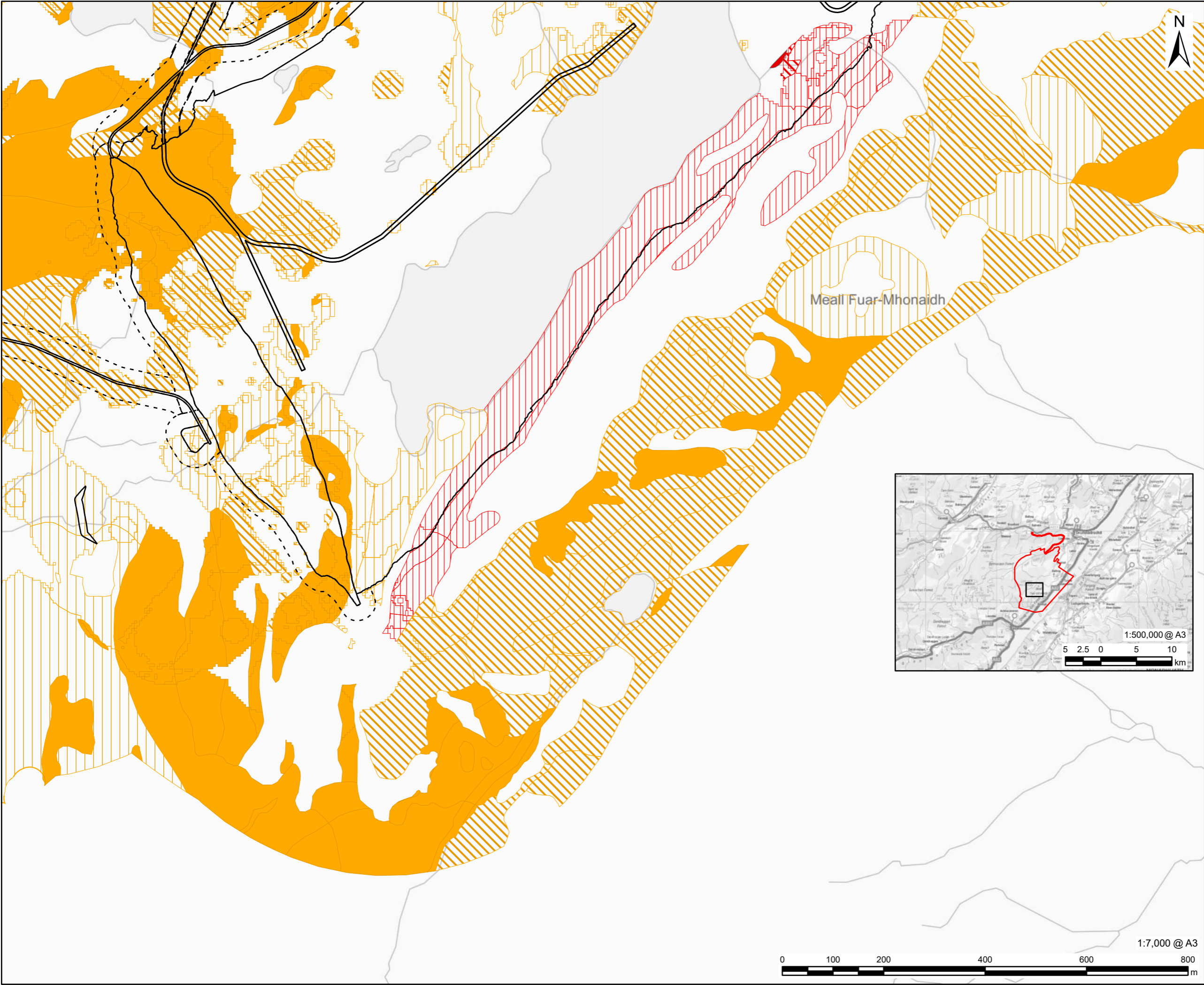
60719875

FIGURE TITLE

Potential Groundwater Dependent Terrestrial Ecosystems

FIGURE NUMBER

Figure.7.9 (Sheet 13)



AECOM

PROJECT

Glen Earrach Pumped Storage Hydro

CLIENT

Glen Earrach Energy Ltd.

CONSULTANT

AECOM Limited
177 Bothwell Street
Glasgow
G2 7ER
www.aecom.com

LEGEND

- Red Line Boundary
- Infrastructure - Habitat Loss and Indirect Modification
 - Loss - permanent
 - Indirect - permanent
 - Indirect - temporary
- Potential GWDTE
 - High
 - High (part)
 - High (small part)
 - Moderate
 - Moderate (part)
 - Moderate (small part)

NOTES

Contains OS data © Crown copyright 2025
Indicated zones of habitat loss and indirect modification are those used in calculations of habitat loss/modification in Chapter 7: Terrestrial ecology and associated appendices

ISSUE PURPOSE

FINAL

PROJECT NUMBER

60719875

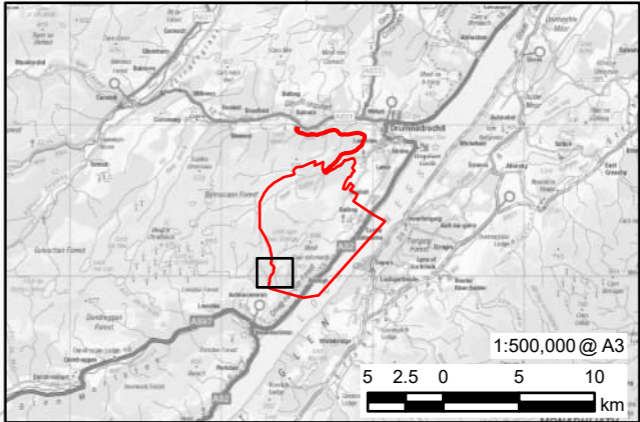
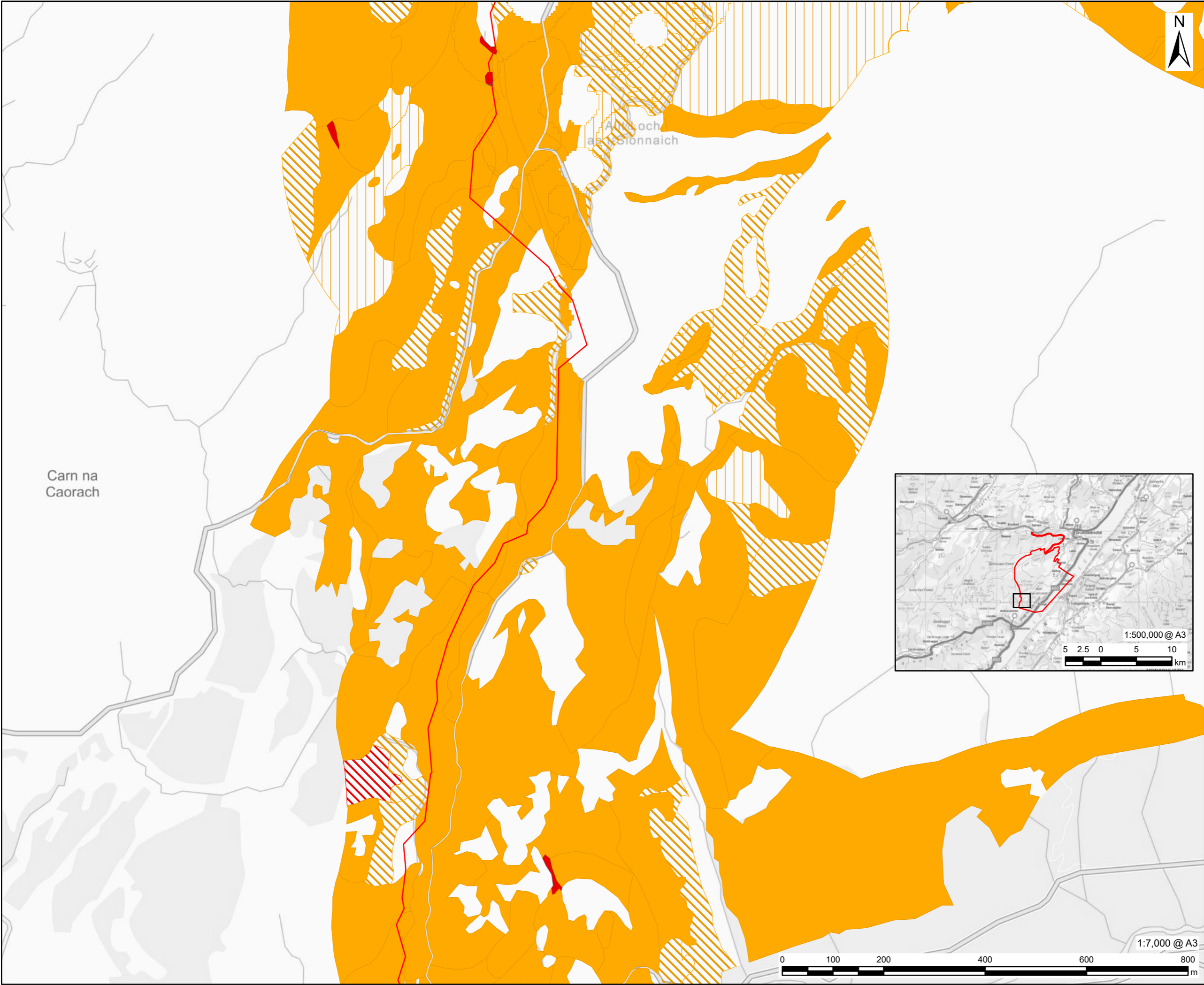
FIGURE TITLE

Potential Groundwater Dependent Terrestrial Ecosystems

FIGURE NUMBER

Figure.7.9 (Sheet 14)

This drawing has been prepared for the use of AECOM's client. It may not be used, modified, reproduced or relied upon by third parties, except as agreed by AECOM or as required by law. AECOM accepts no responsibility, and denies any liability whatsoever, to any party that uses or relies on this drawing without AECOM's express written consent. Do not scale this document. All measurements must be obtained from the stated dimensions.



This drawing has been prepared for the use of AECOM's client. It may not be used, modified, reproduced or relied upon by third parties, except as agreed by AECOM or as required by law. AECOM accepts no responsibility, and denies any liability whatsoever, to any party that uses or relies on this drawing without AECOM's express written consent. Do not scale this document. All measurements must be obtained from the stated dimensions.

AECOM

PROJECT
Glen Earrach Pumped Storage Hydro

CLIENT
Glen Earrach Energy Ltd.

CONSULTANT
AECOM Limited
177 Bothwell Street
Glasgow
G2 7ER
www.aecom.com

LEGEND

Red Line Boundary

Potential GWDTE

High

High (part)

Moderate

Moderate (part)

Moderate (small part)

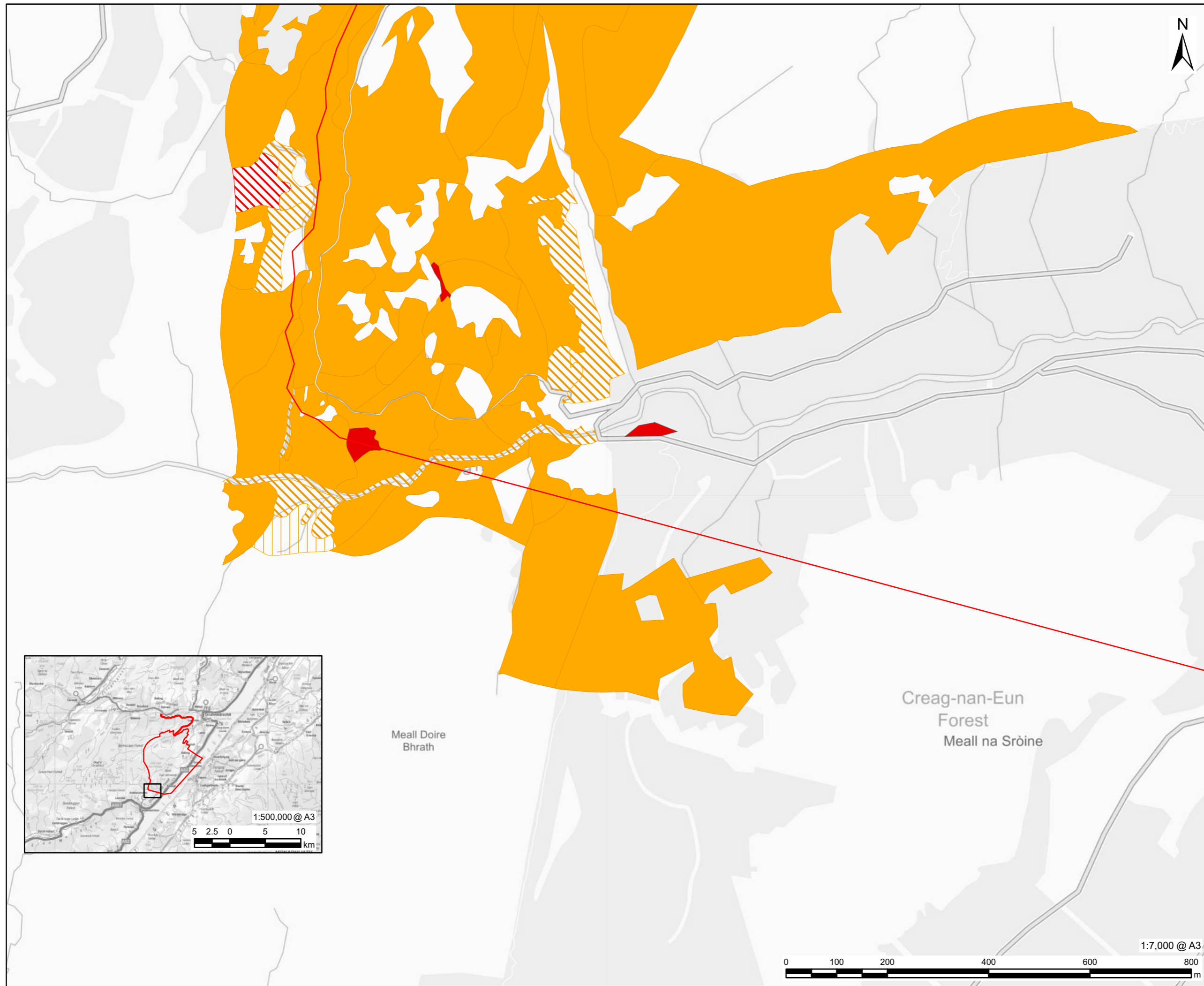
NOTES
Contains OS data © Crown copyright 2025
Indicated zones of habitat loss and indirect modification are those used in calculations of habitat loss/modification in Chapter 7: Terrestrial ecology and associated appendices

ISSUE PURPOSE
FINAL

PROJECT NUMBER
60719875

FIGURE TITLE
Potential Groundwater Dependent Terrestrial Ecosystems

FIGURE NUMBER
Figure.7.9 (Sheet 15)



This drawing has been prepared for the use of AECOM's client. It may not be used, modified, reproduced or relied upon by third parties, except as agreed by AECOM or as required by law. AECOM accepts no responsibility, and denies any liability whatsoever, to any party that uses or relies on this drawing without AECOM's express written consent. Do not scale this document. All measurements must be obtained from the stated dimensions.

PROJECT







Glen Earrach Pumped
Storage Hydro

CLIENT
Glen Earrach Energy Ltd.

CONSULTANT

AECOM Limited
177 Bothwell Street
Glasgow
G2 7ER
www.aecom.com

LEGEND

-  Red Line Boundary
- Potential GWDTE
-  High
-  High (part)
-  Moderate
-  Moderate (part)
-  Moderate (small part)

NOTES

Contains OS data © Crown copyright
2025
Indicated zones of habitat loss and
indirect modification are those used in
calculations of habitat loss/modification
in Chapter 7: Terrestrial ecology and
associated appendices

ISSUE PURPOSE

FINAL

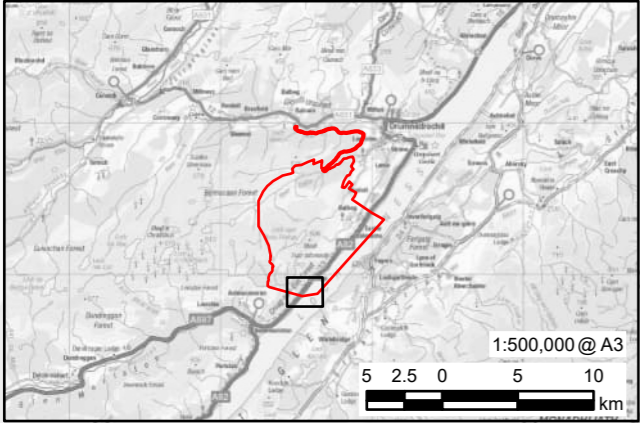
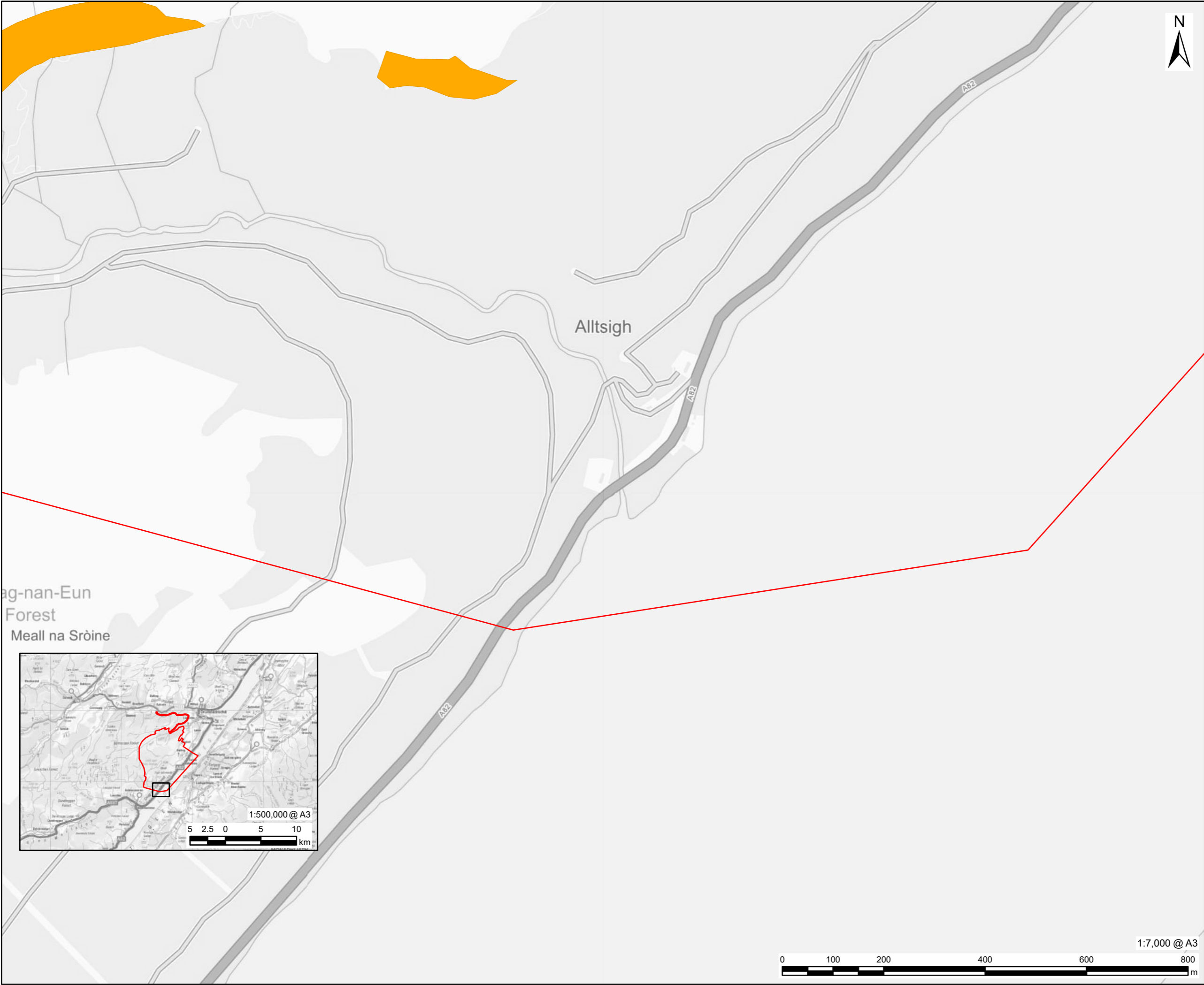
PROJECT NUMBER
60719875

FIGURE TITLE

Potential Groundwater Dependent Terrestrial Ecosystems

FIGURE NUMBER

Figure.7.9 (Sheet 16)



AECOM

PROJECT

Glen Earrach Pumped Storage Hydro

CLIENT

Glen Earrach Energy Ltd.

CONSULTANT

AECOM Limited
177 Bothwell Street
Glasgow
G2 7ER
www.aecom.com

LEGEND

- Red Line Boundary
- Potential GWDTE Moderate

NOTES

Contains OS data © Crown copyright 2025
Indicated zones of habitat loss and indirect modification are those used in calculations of habitat loss/modification in Chapter 7: Terrestrial ecology and associated appendices

ISSUE PURPOSE

FINAL

PROJECT NUMBER

60719875

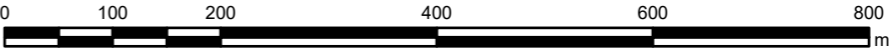
FIGURE TITLE

Potential Groundwater Dependent Terrestrial Ecosystems

FIGURE NUMBER

Figure.7.9 (Sheet 17)

1:7,000 @ A3



This drawing has been prepared for the use of AECOM's client. It may not be used, modified, reproduced or relied upon by third parties, except as agreed by AECOM or as required by law. AECOM accepts no responsibility, and denies any liability whatsoever, to any party that uses or relies on this drawing without AECOM's express written consent. Do not scale this document. All measurements must be obtained from the stated dimensions.