

- LEGEND**
- Red Line Boundary
 - Access Tracks
 - Lower Control Works
 - Compounds
 - Embankments & Spillway
 - Headpond
 - Secondary Bund
 - Vantage Point Locations

- 2km Viewshed at 25m**
- Visible from 1 Vantage Point
 - Visible from 2 Vantage Points
 - Visible from 3 Vantage Points
 - Visible from 4 Vantage Points

NOTES

Contains Ordnance Survey Data © Crown Copyright 2025. All rights reserved. Ordnance Survey Licence AC0000808122

Viewshed has been generated using Ordnance Survey Terrain 50 digital terrain model (DTM), which does not take into account of the screening effects of vegetation, buildings or other structures.

Viewshed is based upon a visibility height of 25m with an observer height of 2m.

ISSUE PURPOSE

FINAL

PROJECT NUMBER

60719875

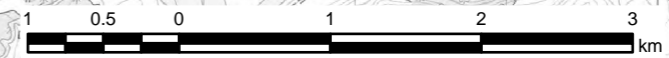
FIGURE TITLE

Vantage Point Viewsheds

FIGURE NUMBER

Figure 8.3

1:50,000 @ A3



This drawing has been prepared for the use of AECOM's client. It may not be used, modified, reproduced or relied upon by third parties, except as signed by AECOM or as required by law. AECOM disclaims any liability whatsoever, and denies any responsibility, for any errors or omissions in this drawing. All measurements must be obtained from the stated dimensions.